

**Ram Kottapalle**

Mobile : +91 9881679692

E-mail : [ramkottapalle@yahoo.com](mailto:ramkottapalle@yahoo.com)

---

# Logo - Symbols

## Corporate Identity

---



**PROFILE**  
DEVELOPMENTS



Pinnacle

estage close







**LEOTAUS**  
Media Pvt. Ltd.



**OLIVIA**  
Let Prosper Together

platinum square  
High Street Shopping



**Solitaires**  
Institute of grooming







**ikf** | The Communication Co-creator



**Gloxinia**  
Maintains Nextgen Class



**PLATINUM  
SQUARE**  
Position Yourself



**PATIL** group





**VASCONGMP**  
CO-ACTION COLLABORATION



**VASCONGMP**  
Coaction Collaboration



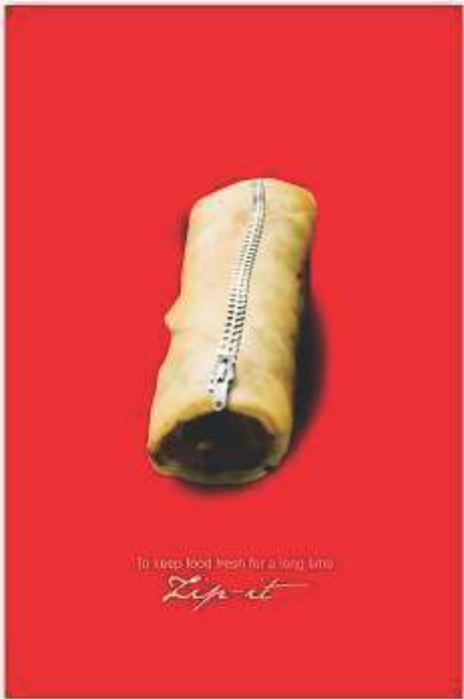
**VASCONGMP**  
Co-action Collaboration



**VASCONINFRA**  
INTEGRATE | INNOVATE | IMPLEMENT

## Press Advertisements

---



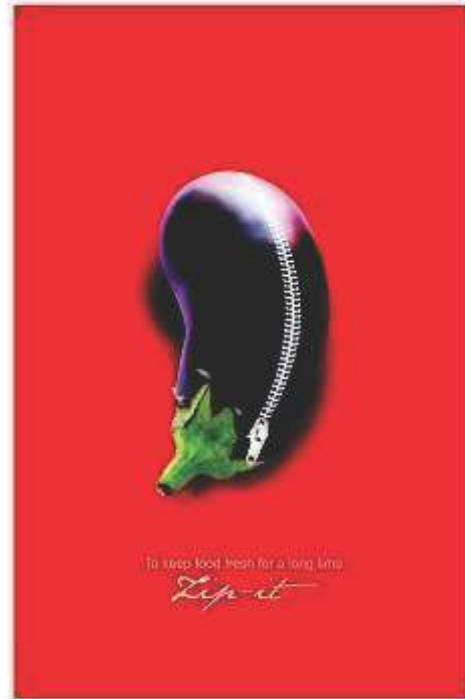
To keep food fresh for a long time  
*Zip it*



- Retains food longer • Locks in freshness longer • Maintains high nutritional levels
- Prevents aroma transfer • Reusable • Economical
- Ideal for Rolls / Bread, Biryani, Cookies, Dosa, Cooked Vegetables, etc. • Made from FDA approved Food-grade material • Convenient to use

Fill it. Zip it. Just fresh.

© 2010 Ziploc



To keep food fresh for a long time  
*Zip it*



- Retains food longer • Locks in freshness longer • Maintains high nutritional levels
- Prevents aroma transfer • Reusable • Economical
- Ideal for Rolls / Bread, Biryani, Cookies, Dosa, Cooked Vegetables, etc. • Made from FDA approved Food-grade material • Convenient to use

Fill it. Zip it. Just fresh.

© 2010 Ziploc

**OMAXE**

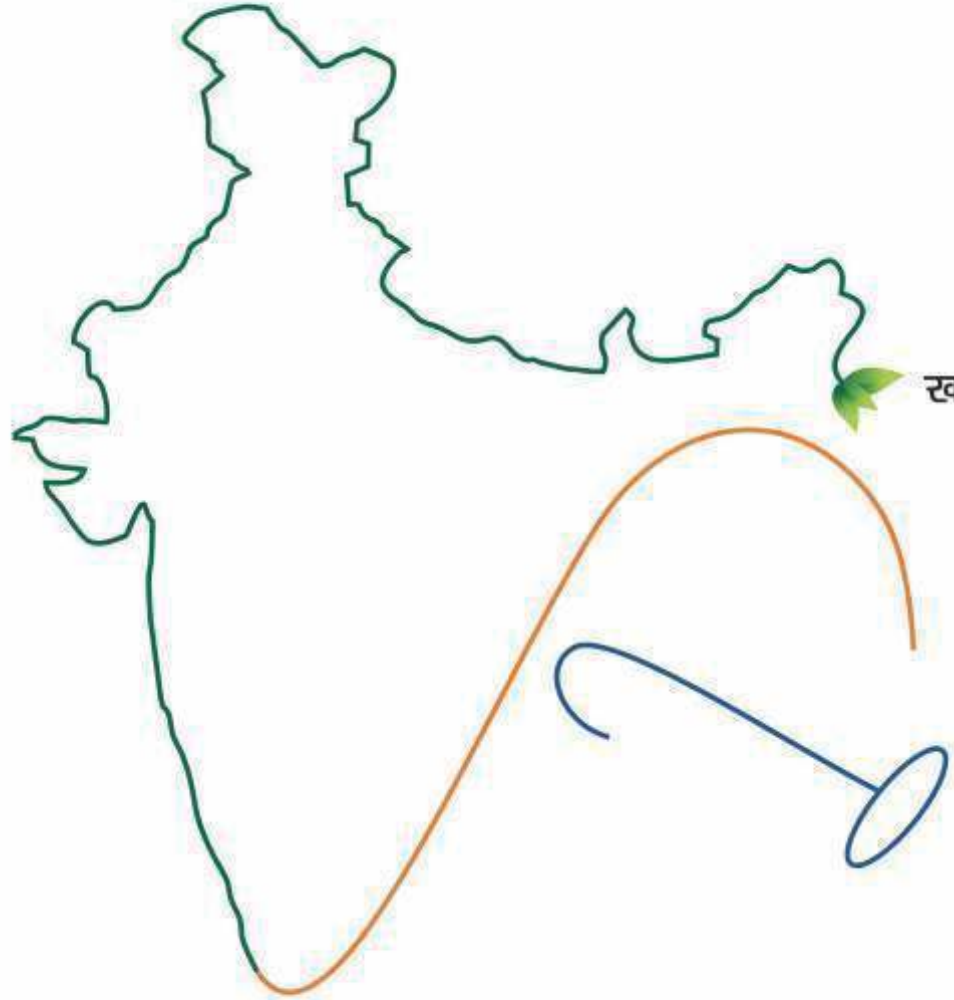
Decide business over a friendly game of golf.

OMAXE is a registered trademark of Omaxe Group of Companies. All rights reserved. © 2010 Omaxe Group of Companies. All rights reserved. Omaxe Group of Companies is a leading real estate developer in India. Omaxe Group of Companies is a leading real estate developer in India. Omaxe Group of Companies is a leading real estate developer in India.

**OMAXE**

a limited few for a limited few

OMAXE is a registered trademark of Omaxe Group of Companies. All rights reserved. © 2010 Omaxe Group of Companies. All rights reserved. Omaxe Group of Companies is a leading real estate developer in India. Omaxe Group of Companies is a leading real estate developer in India. Omaxe Group of Companies is a leading real estate developer in India.



खादी नहीं है, सिर्फ व्यापार, यह है विचार...



वर्ष 1992 के अक्टूबर के मास मास्य खादी ने खादी को एक उद्योग से जोड़ा बाजार मान्यता के साथ-साथ  
भारत की आत्मनिर्भरता का और इससे अर्थिक विकास प्राप्त सकता है 1998 में खादी और ग्रामोद्योग  
आयोग (के.बी.आई.सी.) की स्थापना की।

एने वर्षों में कि पिछले 4-5 वर्षों में हमने 5 लाख खादी को आत्मनिर्भर होने में मदद की है। हमने यह प्रयास  
किया है कि हमारे जुड़े हर इलाका, हर गाँव को आत्मनिर्भर बनाने में मदद कर सके।



**खादी और ग्रामोद्योग आयोग**

सूक्ष्म उद्योग और सहायक राष्ट्रीय पंचालय, भारत सरकार के अधीन  
3, इन्दिरा रोड, पिले चारों गतिमन, मुंबई - 400 006  
फोन नं 022-26714142 वेब साईट: www.kvic.org.in

# NO

high blood pressure

"Band karo bakwas. Travel first class."

Hurt by painful hidden costs, over billing on net, long queues, irresponsible travel agents? Here's the one stop pain reliever for all your travel.

The Smart Shop. It makes travel easy, convenient & hassle free. You walk in, you pay, you book tickets. Rail. Bus. Air. Hotels. Intra-wide. And world-wide. No hidden charges. No service charges. No refund charges. No headaches. It only everything in life was this free of pain.



The Smart Shop  
Travel & beyond

# NO

credit card heart attacks

"Band karo bakwas. Travel first class."

Hurt by painful hidden costs, over billing on net, long queues, irresponsible travel agents? Here's the one stop pain reliever for all your travel.

The Smart Shop. It makes travel easy, convenient & hassle free. You walk in, you pay, you book tickets. Rail. Bus. Air. Hotels. Intra-wide. And world-wide. No hidden charges. No service charges. No refund charges. No headaches. It only everything in life was this free of pain.



The Smart Shop  
Travel & beyond

# NO

"no hotel" nightmares on your holidays

"Band karo bakwas. Travel first class."

Hurt by painful hidden costs, over billing on net, long queues, irresponsible travel agents? Here's the one stop pain reliever for all your travel.

The Smart Shop. It makes travel easy, convenient & hassle free. You walk in, you pay, you book tickets. Rail. Bus. Air. Hotels. Intra-wide. And world-wide. No hidden charges. No service charges. No refund charges. No headaches. It only everything in life was this free of pain.



The Smart Shop  
Travel & beyond

# NO

hidden booking charges

"Band karo bakwas. Travel first class."

Hurt by painful hidden costs, over billing on net, long queues, irresponsible travel agents? Here's the one stop pain reliever for all your travel.

The Smart Shop. It makes travel easy, convenient & hassle free. You walk in, you pay, you book tickets. Rail. Bus. Air. Hotels. Intra-wide. And world-wide. No hidden charges. No service charges. No refund charges. No headaches. It only everything in life was this free of pain.



The Smart Shop  
Travel & beyond

# NO

running after packed buses

"Band karo bakwas. Travel first class."

Hurt by painful hidden costs, over billing on net, long queues, irresponsible travel agents? Here's the one stop pain reliever for all your travel.

The Smart Shop. It makes travel easy, convenient & hassle free. You walk in, you pay, you book tickets. Rail. Bus. Air. Hotels. Intra-wide. And world-wide. No hidden charges. No service charges. No refund charges. No headaches. It only everything in life was this free of pain.



The Smart Shop  
Travel & beyond



# "Band karo bakwas. Travel first class."

Hurt by painful hidden costs, over billing on net, long queues, irresponsible travel agents? Here's the one stop pain reliever for all your travel.

The Smart Shop. It makes travel easy, convenient & hassle free. You walk in, you pay, you book tickets. Rail. Bus. Air. Hotels. Intra-wide. And world-wide. No hidden charges. No service charges. No refund charges. No headaches. It only everything in life was this free of pain.



The Smart Shop  
Travel & beyond





**Lower premium.**



**Higher bonus.**

ALMPL

At Postal Life Insurance, we don't believe in tall claims. We believe in actual performance. Which means no high premiums. No hidden charges. And the assurance of higher bonus at lower premium. Our happy customers include employees of public & local zilla level bodies, banks, states, universities, defence and even the rural sector. We are fully computerised, to deal with maturity, death claims, surrender cases, loan cases, etc. To benefit for a lifetime, visit us on [www.indiapost.gov.in](http://www.indiapost.gov.in)



Postal Life Insurance  
एनएलए ऑफिस फिलर



**Higher bonus.**



**Lower premium.**

ALMPL

At Postal Life Insurance, we don't believe in tall claims. We believe in actual performance. Which means no high premiums. No hidden charges. And the assurance of higher bonus at lower premium. Our happy customers include employees of public & local zilla level bodies, banks, states, universities, defence and even the rural sector. We are fully computerised, to deal with maturity, death claims, surrender cases, loan cases, etc. To benefit for a lifetime, visit us on [www.indiapost.gov.in](http://www.indiapost.gov.in)



Postal Life Insurance  
एनएलए ऑफिस फिलर



**Lower premium.**



**Higher bonus.**



ALMPL

At Postal Life Insurance, we don't believe in tall claims. We believe in actual performance. Which means no high premiums. No hidden charges. And the assurance of higher bonus at lower premium. Our happy customers include employees of public & local zilla level bodies, banks, states, universities, defence and even the rural sector. We are fully computerised, to deal with maturity, death claims, surrender cases, loan cases, etc. To benefit for a lifetime, visit us on [www.indiapost.gov.in](http://www.indiapost.gov.in)



Postal Life Insurance  
एनएलए ऑफिस फिलर

*Khadi Youth of India* | **Classic Crafting**

The Khadi and Village Industries Commission (KVIC) is a government of India organization that promotes and develops the Khadi and Village Industries. It is a public sector organization that provides financial and technical assistance to the Khadi and Village Industries. It also provides training and skill development to the artisans and entrepreneurs in the Khadi and Village Industries.



**KHADI AND VILLAGE INDUSTRIES COMMISSION**  
 Ministry of Micro, Small & Medium Enterprises, Govt. of India  
 Headquarters: 1, Park Road, Old Park Scheme, Mumbai 400 004  
 Telephone: 022-26771000, Website: khadi.gov.in




*Khadi Youth of India* | **Classic Crafting**

The Khadi and Village Industries Commission (KVIC) is a government of India organization that promotes and develops the Khadi and Village Industries. It is a public sector organization that provides financial and technical assistance to the Khadi and Village Industries. It also provides training and skill development to the artisans and entrepreneurs in the Khadi and Village Industries.



**KHADI AND VILLAGE INDUSTRIES COMMISSION**  
 Ministry of Micro, Small & Medium Enterprises, Govt. of India  
 Headquarters: 1, Park Road, Old Park Scheme, Mumbai 400 004  
 Telephone: 022-26771000, Website: khadi.gov.in




*Khadi Youth of India* | **Classic Crafting**

The Khadi and Village Industries Commission (KVIC) is a government of India organization that promotes and develops the Khadi and Village Industries. It is a public sector organization that provides financial and technical assistance to the Khadi and Village Industries. It also provides training and skill development to the artisans and entrepreneurs in the Khadi and Village Industries.

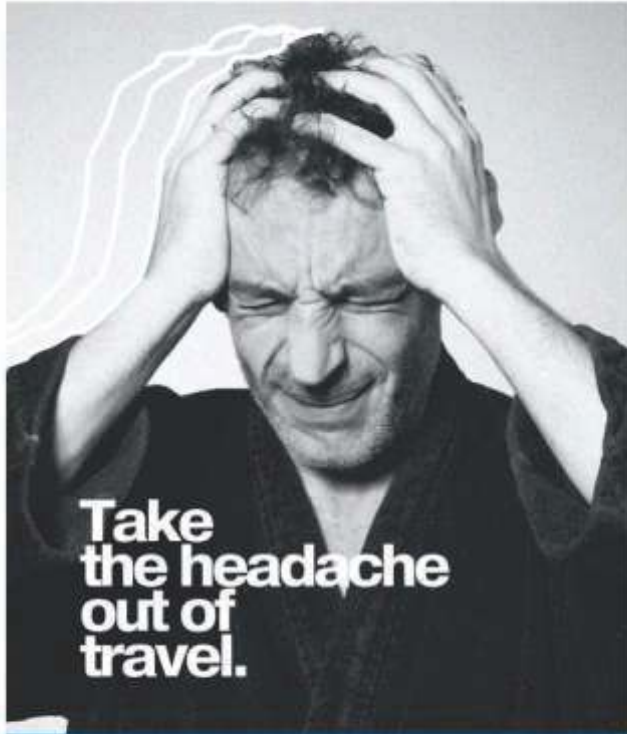


**KHADI AND VILLAGE INDUSTRIES COMMISSION**  
 Ministry of Micro, Small & Medium Enterprises, Govt. of India  
 Headquarters: 1, Park Road, Old Park Scheme, Mumbai 400 004  
 Telephone: 022-26771000, Website: khadi.gov.in







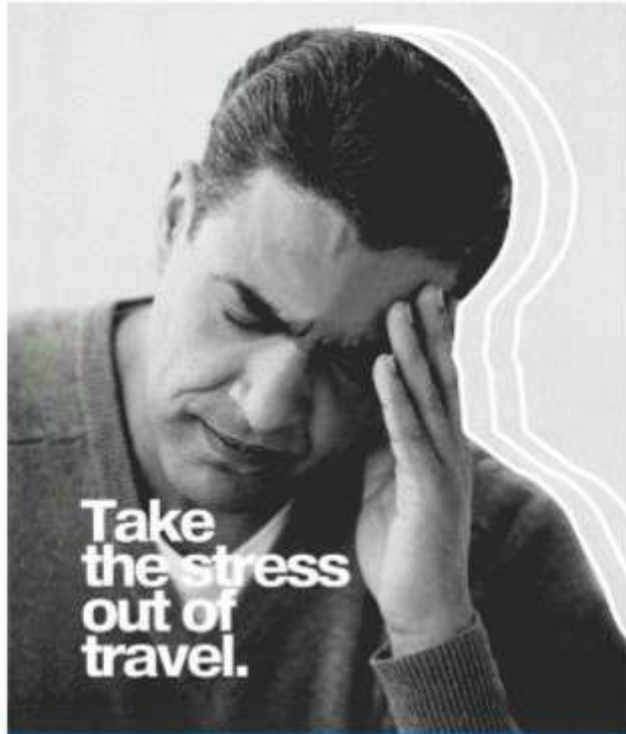



# Take the headache out of travel.

Easy, convenient and hassle-free travel.

Start by making better travel, even taking on the long plane, improve your travel. There's the one step you need to take.

**The Smart Shop**  
Travel & Beyond

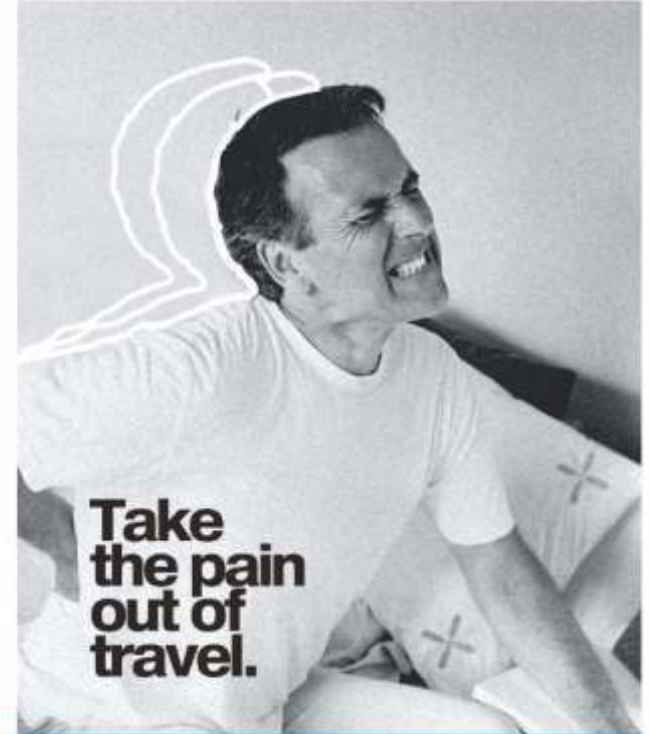


# Take the stress out of travel.

Easy, convenient and hassle-free travel.

Start by making better travel, even taking on the long plane, improve your travel. There's the one step you need to take.

**The Smart Shop**  
Travel & Beyond



# Take the pain out of travel.

Easy, convenient and hassle-free travel.

Start by making better travel, even taking on the long plane, improve your travel. There's the one step you need to take.

**The Smart Shop**  
Travel & Beyond



At some places, trust comes naturally



• No Hidden Costs • Low Interest Rates • Simple Process  
• Easy Approvals • Policy Linked Security



LIC HOUSING FINANCE LTD.

• Pune Tel. 25662004, 25655485 • Pimpri Tel. 27425000

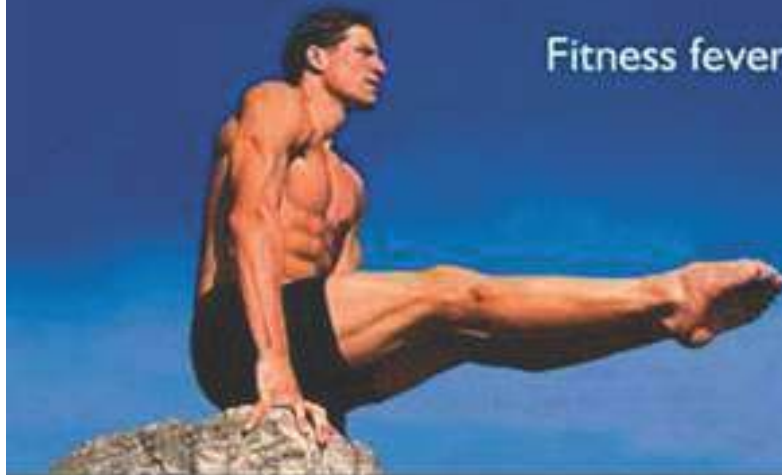
Complete viewing experience... you wish you had a third eye!

The world was introduced colour TV from a company known for its innovative technology that has reached every corner of the world. It is now the most popular and most widely used medium in the world's most advanced viewing experience. In fact, it has made you feel as if you were there.



TOSHIBA

Fitness fever is now in the air!



**BEST**  
INTERNATIONAL  
FITNESS  
EQUIPMENT

**BEST**  
FITNESS  
PROFESSIONALS  
IN INDIA

**BEST**  
ANNUAL  
MEMBERSHIP  
OFFER

Most scientific training by fitness mastermind Kaizzad Kapadia

Goodluck Chowk, Deccan Gymkhana : 4032025/6



Leave the  
100cc to them



Presenting 150cc  
*Firo F*  
Rs.44000/-only

4 times national motocross champion  
Powered its way from Mumbai to Bangalore in 12 hours flat  
World record holder-crossed 4 highest motorable passes in 24 hours

TVS

Are you still riding  
a 100cc bike?



Presenting 150cc  
*Firo F*  
Rs.44000/-only

4 times national motocross champion  
Powered its way from Mumbai to Bangalore in 12 hours flat  
World record holder-crossed 4 highest motorable passes in 24 hours

TVS

Are you still playing  
with a 100cc toy?



Presenting 150cc  
*Firo F*  
Rs.44000/-only

4 times national motocross champion  
Powered its way from Mumbai to Bangalore in 12 hours flat  
World record holder-crossed 4 highest motorable passes in 24 hours

TVS

There is a message in their silence can you hear it?

Give them the home of their dreams.

LIC HOUSING FINANCE LTD.  
Bring home peace of mind

TOLL FREE NO. 1600 222 524

Living CRAMPED!  
For how long?

LIC HOUSING FINANCE LTD.  
Bring home peace of mind

TOLL FREE NO. 1600 222 524

desperately need a  
**NEW HOME?**

LIC HOUSING FINANCE LTD.  
Bring home peace of mind

TOLL FREE NO. 1600 222 524



**Presenting the world's first Temple of Environment**

**AMANORA**  
Pristinely Managed

**THE STRIUM INKRA**  
The environmental award is supported by Green Group

**ISO 14001**  
CERTIFIED

At Amanora Park, from the environment's side, which is why we've introduced a Temple to it. Where there are green and happy Mother Nature can make a promise to take the responsibility towards the environment. And this is the message to protect our environment. The Temple of Environment is made of clear glass, the sun will let it glow and the green of the sky will be the green of the Temple. It is a symbol of our commitment to the environment. - Inspired and built.

By: Hyderabad-based Amanora Park - A World of Environment | A Project by City Corporation Limited

**LAUNCHING**  
**Mont Vert Belrose**  
with  
**Spirits of India**  
Community Fund

**Mont Vert Belrose - Cosmopolitan homes to let your kids grow with a happier view of the world**

Mont Vert Belrose, Cosmopolitan homes with a better view of the world, launched by Mont Vert Group and Belrose Group, offering a variety of homes, with prime locations in different Indian cities. Get a wide selection of well-maintained properties. It offers not only better views, but also more value for your money and quality of living. Mont Vert Belrose. Enjoy the view from the top.

**MONT VERT Belrose**

**WAXOYL ANTI-AGEING TREATMENT FOR CARS, NOW IN INDIA.**

Your car is now safe against rust, corrosion, dirt and UV rays. With Waxoyl, an auto-care treatment that protects your car against all environmental influences. And gives it a long lasting, deep-wet gloss. Waxoyl also repels spills of coffee, tea etc. and keeps the upholstery stain-free. The plastics and the underbody also remain spotlessly clean. The treatment is so effective that GM, Nissan, Honda and Mitsubishi have recommended it abroad. The U. N. Peace Force, to extend their cars' life, also uses Waxoyl, which comes with an assurance that your car will stay new, bumper-to-bumper, inside-out, for years to come.

**Waxoyl**  
Keeps Car New

Get your car Waxoyled before monsoon, call 5671557/18873823062290 or drive in at B.L.L. Shandil Service Station, Deccan. Tel.: 5631270. & B.L. Bhargava Indica Showroom, Pashan. Tel.: 5673554, 5673555. E-mail: waxy@populartwaxoyl.com. Website: www.populartwaxoyl.com

**Wi Fi ...**

High-Speed Wireless Broadband Internet Connectivity, for the freedom to roam, and surf the web without wires. For details, call our Service Centre at extension 4.

**TAJ**  
Rajiv Gandhi  
**ICE DIAMOND**  
Plus

**73C99**  
**SIDDU**  
अच्छी कपास का वादा!

**सबसे भारी!**

**XYLEM**  
DRIVEN BY SCIENCE

XYLEM Seeds Pvt. Ltd.  
Plot 2, 3 Corp. Office, S-1, Industrial Estate, 6th Phase, Saketpur Industrial Estate, Nagpur-440004, Maharashtra  
Hyderabad - 500082, Andhra Pradesh, India. Ph. 01-40-3343 4400 Fax: +91 40 3347 3998

अधिक जानकारी के लिए: 040 3043 4400

**सोने जैसी कपास की, लीला यह 'कृष्णा' की**

• अधिकतम होंठों के लिए उत्कृष्ट किस्म • पूरा-समय की असीम क्षमता • 200 सूतक कीलों के प्रति क्षमशीलता • अधिक उपज, अधिक लम्बा • सबसे अच्छी की किस्म

**पाटल कृष्णा**  
असली कपास की

पाटल बीज • बरसेल • कच्छी

**कपास का असली हीरा**

• इसे ही असली अटल, अधिक समय तक • अधिक उपज, अधिक लम्बा • विभिन्न & अधिकतम होंठों के लिए उत्कृष्ट किस्म • बड़े पैमाने • सबसे अच्छी की किस्म

**पाटल अटल**  
असली कपास की

पाटल बीज • बरसेल • कच्छी



EVERYTHING ELSE WILL GO  
**UNNOTICED!**

- CURTAIN CLOTH • SOFA CLOTH • BEDSHEETS
- COVERS • CARPETS AND ACCESSORIES

## SUDARSHAN FURNISHINGS

418, Narayan Peth, Umbrya Ganpati Cross Road, off Laxmi Road,  
Pune - 30. Ph.: +91 20 2448 2397, 2448 2398, 6520 9949.

Email: sudarshanfurnishings@gmail.com

Website: www.sudarshanfurnishings.com



EVERYTHING ELSE WILL GO  
**UNNOTICED!**

- CURTAIN CLOTH • SOFA CLOTH • BEDSHEETS
- COVERS • CARPETS AND ACCESSORIES

## SUDARSHAN FURNISHINGS

418, Narayan Peth, Umbrya Ganpati Cross Road, off Laxmi Road,  
Pune - 30. Ph.: +91 20 2448 2397, 2448 2398, 6520 9949.

Email: sudarshanfurnishings@gmail.com

Website: www.sudarshanfurnishings.com



EVERYTHING ELSE WILL GO  
**UNNOTICED!**

- CURTAIN CLOTH • SOFA CLOTH • BEDSHEETS
- COVERS • CARPETS AND ACCESSORIES

## SUDARSHAN FURNISHINGS

418, Narayan Peth, Umbrya Ganpati Cross Road, off Laxmi Road,  
Pune - 30. Ph.: +91 20 2448 2397, 2448 2398, 6520 9949.

Email: sudarshanfurnishings@gmail.com

Website: www.sudarshanfurnishings.com



invest in leisure!

**SAI ERECTORS**  
 An ISO 9001:2015 Certified Company

Autonomy, serenity, nature, spring, your choice when to invest. Blazes, greens, yellows and reds, your choice when to invest. Flavors, textures, smells, aromas and colors, your choice when to invest. And we are not just talking about swimming pools, lap pools, hot tubs, gyms, health spas, spas, saunas, tennis courts, and all the other amenities and conveniences that make sense. We are talking about the lifestyle. Because this is going to be your lifetime dream and your investment can make your dream come true. So relax, think and take the decision. We are sure it will be your right decision. Thank!

**Brooklands**  
 Premium Leisure Homes,  
 Ready for possession

Sai Capital, 11th Floor, Sangeet Nagar Road Pune - 411004. Tel: +91-2042777111/11161114 Email: saic@saiconsultants.com, www.saiconsultants.com, Sai Brooklands, Survey No. 205, Tatyasaheb, Mamburda-Pune Road Lonavala.

invest in leisure!

**SAI ERECTORS**  
 An ISO 9001:2015 Certified Company

Autonomy, serenity, nature, spring, your choice when to invest. Blazes, greens, yellows and reds, your choice when to invest. Flavors, textures, smells, aromas and colors, your choice when to invest. And we are not just talking about swimming pools, lap pools, hot tubs, gyms, health spas, spas, saunas, tennis courts, and all the other amenities and conveniences that make sense. We are talking about the lifestyle. Because this is going to be your lifetime dream and your investment can make your dream come true. So relax, think and take the decision. We are sure it will be your right decision. Thank!

**Brooklands**  
 Premium Leisure Homes,  
 Ready for possession

Sai Capital, 11th Floor, Sangeet Nagar Road Pune - 411004. Tel: +91-2042777111/11161114 Email: saic@saiconsultants.com, www.saiconsultants.com, Sai Brooklands, Survey No. 205, Tatyasaheb, Mamburda-Pune Road Lonavala.

invest in leisure!

**SAI ERECTORS**  
 An ISO 9001:2015 Certified Company

premium leisure homes, ready for possession  
 call 9999999999 / sms 80808

**Brooklands**  
 Premium Leisure Homes,  
 Ready for possession

Sai Capital, 11th Floor, Sangeet Nagar Road Pune - 411004. Tel: +91-2042777111/11161114 Email: saic@saiconsultants.com, www.saiconsultants.com, Sai Brooklands, Survey No. 205, Tatyasaheb, Mamburda-Pune Road Lonavala.

invest in leisure!

**SAI ERECTORS**  
 An ISO 9001:2015 Certified Company

Autonomy, serenity, nature, spring, your choice when to invest. Blazes, greens, yellows and reds, your choice when to invest. Flavors, textures, smells, aromas and colors, your choice when to invest. And we are not just talking about swimming pools, lap pools, hot tubs, gyms, health spas, spas, saunas, tennis courts, and all the other amenities and conveniences that make sense. We are talking about the lifestyle. Because this is going to be your lifetime dream and your investment can make your dream come true. So relax, think and take the decision. We are sure it will be your right decision. Thank!

**Brooklands**  
 Premium Leisure Homes,  
 Ready for possession

Sai Capital, 11th Floor, Sangeet Nagar Road Pune - 411004. Tel: +91-2042777111/11161114 Email: saic@saiconsultants.com, www.saiconsultants.com, Sai Brooklands, Survey No. 205, Tatyasaheb, Mamburda-Pune Road Lonavala.



COOKING GETS  
AWESOME AND INSPIRING!

11+10 DESIGNER KITCHENS ON DISPLAY

**Kitchendécor**  
WHERE FORM FOLLOWS FUNCTION

**Kothrud:** Opp. Yashwantrao Chavan Natyagriha,  
Ph.: 32505588, 25391365  
**Aundh:** Near Sony World. Ph.: 32505589, 25889033  
www.kitchendecor.in; sales@kitchendecor.in



COOKING GETS  
AWESOME AND INSPIRING!

11+10 DESIGNER KITCHENS ON DISPLAY

**Kitchendécor**  
WHERE FORM FOLLOWS FUNCTION

**Kothrud:** Opp. Yashwantrao Chavan Natyagriha,  
Ph.: 32505588, 25391365  
**Aundh:** Near Sony World. Ph.: 32505589, 25889033  
www.kitchendecor.in; sales@kitchendecor.in



COOKING GETS  
AWESOME AND INSPIRING!

11+10 DESIGNER KITCHENS ON DISPLAY

**Kitchendécor**  
WHERE FORM FOLLOWS FUNCTION

**Kothrud:** Opp. Yashwantrao Chavan Natyagriha,  
Ph.: 32505588, 25391365  
**Aundh:** Near Sony World. Ph.: 32505589, 25889033  
www.kitchendecor.in; sales@kitchendecor.in



COOKING GETS  
AWESOME AND INSPIRING!

11+10 DESIGNER KITCHENS ON DISPLAY

**Kitchendécor**  
WHERE FORM FOLLOWS FUNCTION

**Kothrud:** Opp. Yashwantrao Chavan Natyagriha,  
Ph.: 32505588, 25391365  
**Aundh:** Near Sony World. Ph.: 32505589, 25889033  
www.kitchendecor.in; sales@kitchendecor.in

Ad-Club | First Prize Best Art Director | 2010

**Kirlaskar**  
Enriching Lives

**ADDING GREEN TO ANDHRA'S HERITAGE**  
COMPLETE FOR WORLD'S SECOND LARGEST LEAF IRRIGATION PROJECT ANDHRA PRADESH FROM THE GOVT. OF AP

Agri-irrigation provides unparalleled opportunities to reap 100% productivity and also you get to grow the same 2000+ KiloKals Pump in existing, in their own and pending schemes across the largest area (across 25 states). The Kirlaskar pumps incorporate wide varieties of models and the target manufacturers ensure prompt delivery in India. The 50% discount, availability, full-time presence, 24x7 customer care services in the field, and 40% rebate to provide prompt delivery right from project to commissioning.

**PRODUCTS AVAILABLE FROM:**  
Kirlaskar Limited (Pumps, A Monitoring System, A Controller & Remote Sensing & Water Control for Agriculture and 30,000 TPD of water provided to Hyderabad) and 1,000 TPD of Water Pump Supply (1,000 TPD of Water Pump Supply, 1,000 TPD of Industrial Water Supply, 1,000 TPD)

**CONTRACT INCLUDES:**  
1. Work Order for Stage II of Phase I of Commissioning and Testing of Pumping Station 2. Maintenance of Pumps and Pumping Station 3. Supply of Spare and Pumping, Control and Design & Construction of the Monitoring Unit. Contact:

**KIRLOSKAR BROTHERS LIMITED**  
"CORPORATE" 2, 3rd Floor, 20, Market Street, 400 001, Mumbai, India. Tel: 022 27110434 www.kbl.com

**Kirlaskar**  
Enriching Lives

Managing all that flows. Except few.

On few occasions it's truly unmanageable. But for everything else that flows, we have customized Fluid Management Solutions meeting diverse industry requirements world over. We are the World Leader in Fluid Management. Check out what all we offer...

**KIRLOSKAR BROTHERS LIMITED** Fluid & Control Office: Uday Bhawan, Dink Road, Pune 411 001, India. Tel: 020 2444 0707 Fax: 020 2444 4199 E-mail: kbl@kbl.com Web: www.kbl.com

THERE ARE FEW THINGS WE LIKE TO CHERISH FOREVER.  
LET'S DO IT TOGETHER.

**BRING AN OLD KBL PUMP OR VALVE. GET A NEW ONE ABSOLUTELY FREE.**

1. Corporation and 2. Service of 200 TPD of Water for the largest area (across 25 states) in India. 3. Work Order for Stage II of Phase I of Commissioning and Testing of Pumping Station 4. Maintenance of Pumps and Pumping Station 5. Supply of Spare and Pumping, Control and Design & Construction of the Monitoring Unit. Contact: KIRLOSKAR BROTHERS LIMITED, "CORPORATE" 2, 3rd Floor, 20, Market Street, 400 001, Mumbai, India. Tel: 022 27110434 www.kbl.com

**The Kirlaskar Advantage...**

- 1. Full-time presence in all states
- 2. 24x7 customer care services
- 3. Prompt delivery in all states
- 4. 40% rebate to provide prompt delivery
- 5. 50% discount on pumps and valves
- 6. 24x7 customer care services

1. Work Order for Stage II of Phase I of Commissioning and Testing of Pumping Station 2. Maintenance of Pumps and Pumping Station 3. Supply of Spare and Pumping, Control and Design & Construction of the Monitoring Unit. Contact: KIRLOSKAR BROTHERS LIMITED, "CORPORATE" 2, 3rd Floor, 20, Market Street, 400 001, Mumbai, India. Tel: 022 27110434 www.kbl.com

**100**

**KIRLOSKAR BROTHERS LIMITED**  
"CORPORATE" 2, 3rd Floor, 20, Market Street, 400 001, Mumbai, India. Tel: 022 27110434 Fax: 022 2711 4199  
Email: kbl@kbl.com Web: www.kbl.com

**Kirlaskar**  
Enriching Lives



Ad-Club | First Prize Best Art Director | 2010

  
Enriching Lives

After almighty, we dared to do it in India.



India's first indigenously developed Process Pumps for desalination of seawater.

Being ahead the various old types of jet-propulsion pumps and water management systems, Kiloskar Brothers Limited (KBL) is proud to introduce the first indigenously developed advanced stage of Seawater Desalination-Process Pumps. It is equipped to the needs of diverse industry demands and meets with quality level as per international quality. With exceptional efficiency and technological advance, these pumps are ideal for providing better water for drinking water, irrigation and industrial usage. The significant achievement is making an indigenously developed desalination unit of water and water management systems.



Pumps | Valves | Motors | Hydro Turbines | Tanking Projects

**KILOSKAR BROTHERS LIMITED**  
Customer Office: "Kiloskar" - 5, No. 40 & 41, Sector - 29, Gurgaon - 122 002, India. Phone: 0122-4444 | www.kiloskar.com

  
Enriching Lives

WE MADE IT POSSIBLE!



India's first indigenously developed Process Pumps for desalination of seawater.

Being ahead the various old types of jet-propulsion pumps and water management systems, Kiloskar Brothers Limited (KBL) is proud to introduce the first indigenously developed advanced stage of Seawater Desalination-Process Pumps. It is equipped to the needs of diverse industry demands and meets with quality level as per international quality. With exceptional efficiency and technological advance, these pumps are ideal for providing better water for drinking water, irrigation and industrial usage. The significant achievement is making an indigenously developed desalination unit of water and water management systems.



Pumps | Valves | Motors | Hydro Turbines | Tanking Projects

**KILOSKAR BROTHERS LIMITED**  
Customer Office: "Kiloskar" - 5, No. 40 & 41, Sector - 29, Gurgaon - 122 002, India. Phone: 0122-4444 | www.kiloskar.com

  
Enriching Lives



WE MADE IT POSSIBLE!

India's first indigenously developed Process Pumps for desalination of seawater.

Being ahead the various old types of jet-propulsion pumps and water management systems, Kiloskar Brothers Limited (KBL) is proud to introduce the first indigenously developed advanced stage of Seawater Desalination-Process Pumps. It is equipped to the needs of diverse industry demands and meets with quality level as per international quality. With exceptional efficiency and technological advance, these pumps are ideal for providing better water for drinking water, irrigation and industrial usage. The significant achievement is making an indigenously developed desalination unit of water and water management systems.



Pumps | Valves | Motors | Hydro Turbines | Tanking Projects

**KILOSKAR BROTHERS LIMITED**  
Customer Office: "Kiloskar" - 5, No. 40 & 41, Sector - 29, Gurgaon - 122 002, India. Phone: 0122-4444 | www.kiloskar.com



**Wipro BPO**  
Winning by Applying Thought

**WIPRO**  
Winning by Thought

**INVITING APPLICATIONS FOR CUSTOMER CARE EXECUTIVES**  
 Eligibility Criteria: • HNC Passouts, Graduates, MBA + Age - 18 to 45 years • Excellent communication skills, fluency in English • Willingness to work in night shifts • Should be comfortable with work pressure

• B.E., B.Tech., M.C.A. are not eligible • Freshers can also apply  
 • Candidates should not be a part of any regular academic course

**Also Hiring for UK process with fixed Saturday & Sunday off**  
 Walk in for an interview with your resume, 2 passport size color photographs, professional of address & phone ID proof.  
 Dates: 15th April to 20th April 2011 Time: 10 am to 5 pm (Shift Timing: 11 am, 2 pm & 4 pm)  
 Venue: • Wipro BPO, 3rd Floor, Special High Street, Metropolitan Gardens, Phase 1  
 Contact Person: Aditi/Pragna on 022-40021749 Email: wipro-recruitment@wipro.com  
 • 12 Hours HR Suboffice: 308, Cybernet Avenue, Near TG, Top Secret World, Ape, Thane Station, Thane (M)  
 Contact Person: Sameer on 0221002050 022-40021749

**Transport Boundary:** Chourajgaon for Mira Road, CST to Belapur, CST to Thane (not beyond Sany Water Park)  
 Ex-Wiproites are also welcome. Please send your resumes to [apadil@wipro.com](mailto:apadil@wipro.com)

**RECENTLY WON AWARDS:** • COMPANY OF THE YEAR - INTERNATIONAL  
 ECONOMIC TIMES (2007-2008) BY BPO AWARDS-2010 • IT NEWS IN ENGLISH (2011) - BPO EMPLOYEE SAT SURVEY - 2010

Follow us on [Facebook](https://www.facebook.com/WiproBPOJobs) [LinkedIn](https://www.linkedin.com/company/wipro)

Wipro is an Equal Opportunity Employer. We encourage persons with disabilities to apply. Wipro doesn't charge any fee at any stage of the recruitment process. Wipro has not authorized any agency/partner to collect any fee for recruitment.

**Wipro BPO**  
Winning by Applying Thought

**WIPRO**  
Winning by Thought

**INVITING APPLICATIONS FOR CUSTOMER CARE EXECUTIVES**  
 Eligibility Criteria: • HNC Passouts, Graduates, MBA + Age - 18 to 45 years • Excellent communication skills, fluency in English • Willingness to work in night shifts • Should be comfortable with work pressure

• B.E., B.Tech., M.C.A. are not eligible • Freshers can also apply  
 • Candidates should not be a part of any regular academic course

**Also Hiring for UK process with fixed Saturday & Sunday off**  
 Walk in for an interview with your resume, 2 passport size color photographs, professional of address & phone ID proof.  
 Dates: 15th April to 20th April 2011 Time: 10 am to 5 pm (Shift Timing: 11 am, 2 pm & 4 pm)  
 Venue: • Wipro BPO, 3rd Floor, Special High Street, Metropolitan Gardens, Phase 1  
 Contact Person: Aditi/Pragna on 022-40021749 Email: wipro-recruitment@wipro.com  
 • 12 Hours HR Suboffice: 308, Cybernet Avenue, Near TG, Top Secret World, Ape, Thane Station, Thane (M)  
 Contact Person: Sameer on 0221002050 022-40021749

**Transport Boundary:** Chourajgaon for Mira Road, CST to Belapur, CST to Thane (not beyond Sany Water Park)  
 Ex-Wiproites are also welcome. Please send your resumes to [apadil@wipro.com](mailto:apadil@wipro.com)

**RECENTLY WON AWARDS:** • COMPANY OF THE YEAR - INTERNATIONAL  
 ECONOMIC TIMES (2007-2008) BY BPO AWARDS-2010 • IT NEWS IN ENGLISH (2011) - BPO EMPLOYEE SAT SURVEY - 2010

Follow us on [Facebook](https://www.facebook.com/WiproBPOJobs) [LinkedIn](https://www.linkedin.com/company/wipro)

Wipro is an Equal Opportunity Employer. We encourage persons with disabilities to apply. Wipro doesn't charge any fee at any stage of the recruitment process. Wipro has not authorized any agency/partner to collect any fee for recruitment.

**Wipro BPO**  
Winning by Applying Thought

**WIPRO**  
Winning by Thought

**INVITING APPLICATIONS FOR CUSTOMER CARE EXECUTIVES**  
 Eligibility Criteria: • HNC Passouts, Graduates, MBA + Age - 18 to 45 years • Excellent communication skills, fluency in English • Willingness to work in night shifts • Should be comfortable with work pressure

• B.E., B.Tech., M.C.A. are not eligible • Freshers can also apply  
 • Candidates should not be a part of any regular academic course

**Also Hiring for UK process with fixed Saturday & Sunday off**  
 Walk in for an interview with your resume, 2 passport size color photographs, professional of address & phone ID proof.  
 Dates: 15th April to 20th April 2011 Time: 10 am to 5 pm (Shift Timing: 11 am, 2 pm & 4 pm)  
 Venue: • Wipro BPO, 3rd Floor, Special High Street, Metropolitan Gardens, Phase 1  
 Contact Person: Aditi/Pragna on 022-40021749 Email: wipro-recruitment@wipro.com  
 • 12 Hours HR Suboffice: 308, Cybernet Avenue, Near TG, Top Secret World, Ape, Thane Station, Thane (M)  
 Contact Person: Sameer on 0221002050 022-40021749

**Transport Boundary:** Chourajgaon for Mira Road, CST to Belapur, CST to Thane (not beyond Sany Water Park)  
 Ex-Wiproites are also welcome. Please send your resumes to [apadil@wipro.com](mailto:apadil@wipro.com)

**RECENTLY WON AWARDS:** • COMPANY OF THE YEAR - INTERNATIONAL  
 ECONOMIC TIMES (2007-2008) BY BPO AWARDS-2010 • IT NEWS IN ENGLISH (2011) - BPO EMPLOYEE SAT SURVEY - 2010

Follow us on [Facebook](https://www.facebook.com/WiproBPOJobs) [LinkedIn](https://www.linkedin.com/company/wipro)

Wipro is an Equal Opportunity Employer. We encourage persons with disabilities to apply. Wipro doesn't charge any fee at any stage of the recruitment process. Wipro has not authorized any agency/partner to collect any fee for recruitment.

**Wipro BPO**  
Winning by Applying Thought

**WIPRO**  
Winning by Thought

**INVITING APPLICATIONS FOR CUSTOMER CARE EXECUTIVES**  
 Eligibility Criteria: • HNC Passouts, Graduates, MBA + Age - 18 to 45 years • Excellent communication skills, fluency in English • Willingness to work in night shifts • Should be comfortable with work pressure

• B.E., B.Tech., M.C.A. are not eligible • Freshers can also apply  
 • Candidates should not be a part of any regular academic course

**Also Hiring for UK process with fixed Saturday & Sunday off**  
 Walk in for an interview with your resume, 2 passport size color photographs, professional of address & phone ID proof.  
 Dates: 15th April to 20th April 2011 Time: 10 am to 5 pm (Shift Timing: 11 am, 2 pm & 4 pm)  
 Venue: • Wipro BPO, 3rd Floor, Special High Street, Metropolitan Gardens, Phase 1  
 Contact Person: Aditi/Pragna on 022-40021749 Email: wipro-recruitment@wipro.com  
 • 12 Hours HR Suboffice: 308, Cybernet Avenue, Near TG, Top Secret World, Ape, Thane Station, Thane (M)  
 Contact Person: Sameer on 0221002050 022-40021749

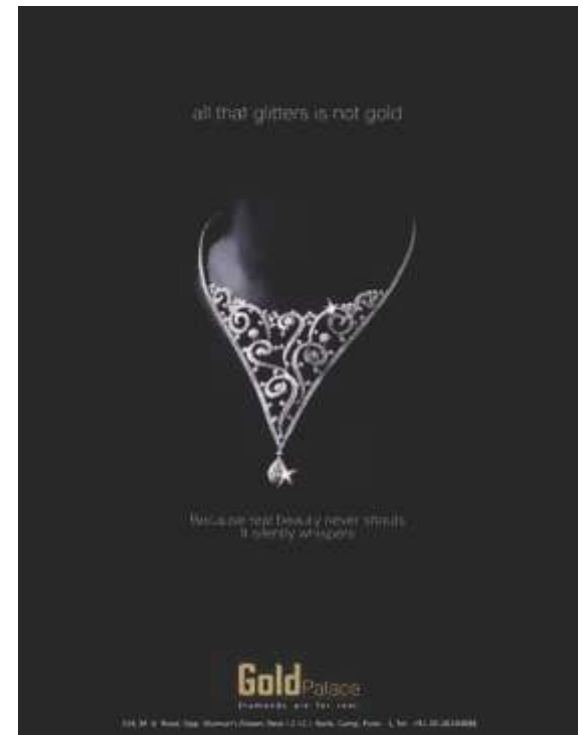
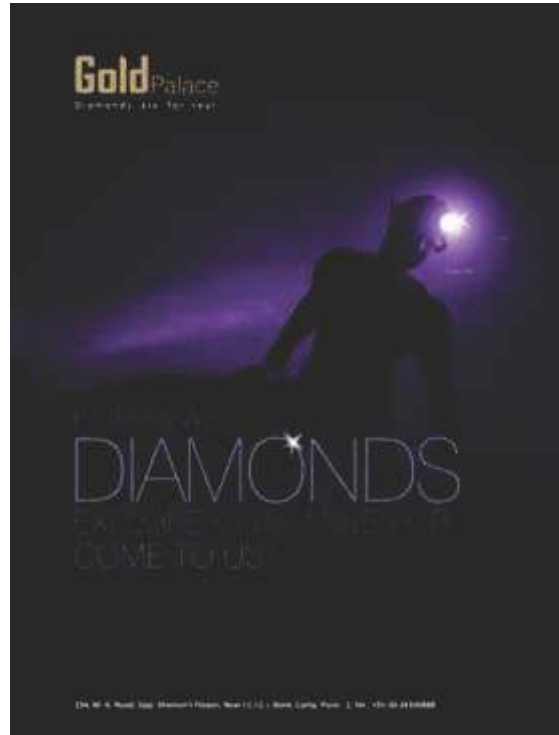
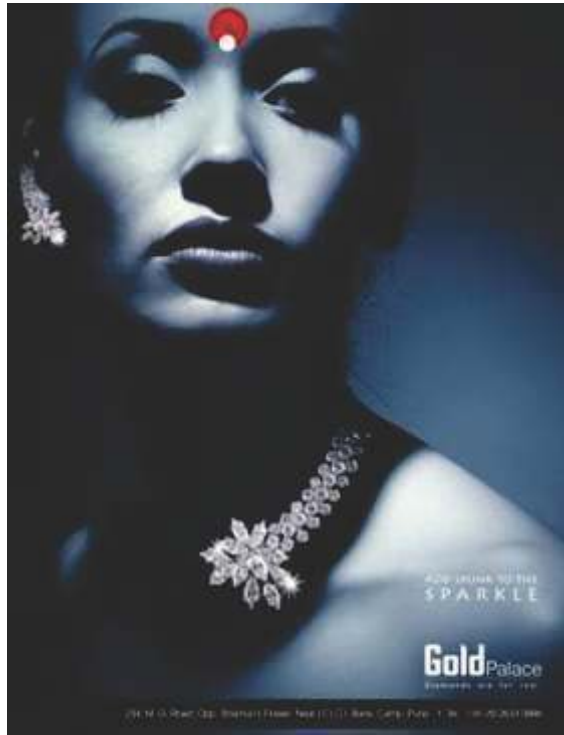
**Transport Boundary:** Chourajgaon for Mira Road, CST to Belapur, CST to Thane (not beyond Sany Water Park)  
 Ex-Wiproites are also welcome. Please send your resumes to [apadil@wipro.com](mailto:apadil@wipro.com)

**RECENTLY WON AWARDS:** • COMPANY OF THE YEAR - INTERNATIONAL  
 ECONOMIC TIMES (2007-2008) BY BPO AWARDS-2010 • IT NEWS IN ENGLISH (2011) - BPO EMPLOYEE SAT SURVEY - 2010

Follow us on [Facebook](https://www.facebook.com/WiproBPOJobs) [LinkedIn](https://www.linkedin.com/company/wipro)

Wipro is an Equal Opportunity Employer. We encourage persons with disabilities to apply. Wipro doesn't charge any fee at any stage of the recruitment process. Wipro has not authorized any agency/partner to collect any fee for recruitment.





KITCHEN THAT  
COMPLIMENTS  
YOUR  
BEAUTY!

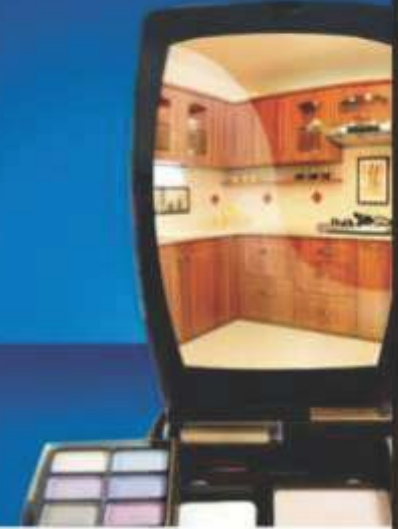


11+10 DESIGNER KITCHENS ON DISPLAY

**Kitchendécor**  
WHERE FORM FOLLOWS FUNCTION

**Kothrud:** Opp. Yashwantrao Chavan Natyagriha.  
**Ph.:** 32505588, 25391365  
**Aundh:** Near Sony World. **Ph.:** 32505589, 25889033  
[www.kitchendecor.in](http://www.kitchendecor.in); [sales@kitchendecor.in](mailto:sales@kitchendecor.in)

KITCHEN THAT IS  
SMART TO  
ACCESS



11+10 DESIGNER KITCHENS ON DISPLAY

**Kitchendécor**  
WHERE FORM FOLLOWS FUNCTION

**Kothrud:** Opp. Yashwantrao Chavan Natyagriha.  
**Ph.:** 32505588, 25391365  
**Aundh:** Near Sony World. **Ph.:** 32505589, 25889033  
[www.kitchendecor.in](http://www.kitchendecor.in); [sales@kitchendecor.in](mailto:sales@kitchendecor.in)

KITCHEN THAT  
FITS IN  
YOUR  
BUDGET!



11+10 DESIGNER KITCHENS ON DISPLAY

**Kitchendécor**  
WHERE FORM FOLLOWS FUNCTION

**Kothrud:** Opp. Yashwantrao Chavan Natyagriha.  
**Ph.:** 32505588, 25391365  
**Aundh:** Near Sony World. **Ph.:** 32505589, 25889033  
[www.kitchendecor.in](http://www.kitchendecor.in); [sales@kitchendecor.in](mailto:sales@kitchendecor.in)

KITCHEN THAT  
SERVES YOU  
DELIGHT



11+10 DESIGNER KITCHENS ON DISPLAY

**Kitchendécor**  
WHERE FORM FOLLOWS FUNCTION

**Kothrud:** Opp. Yashwantrao Chavan Natyagriha.  
**Ph.:** 32505588, 25391365  
**Aundh:** Near Sony World. **Ph.:** 32505589, 25889033  
[www.kitchendecor.in](http://www.kitchendecor.in); [sales@kitchendecor.in](mailto:sales@kitchendecor.in)



Our advice...  
Have an Apple  
every day.



Even we don't want you to visit us!

SPECIALTY CLINIC: • Fetal Medicine Clinic • Infertility Clinic • Female Endocrinology Clinic • Menstrual Cycle Clinic • Fibroids Clinic  
• Endocrine Clinic and wellness centre



Aditya Birla Memorial Hospital, Clinch Road, Pune-411001. Helpline: 020-9071760/2124  
Emergency: 020-90717111 | Obstetrics & Gynaecology: 020-90717122  
E-mail: admin@adityabirlahospital.com | Website: www.adityabirlahospital.com



Even your tears are as precious as your child.  
we care for both.

**IVF FACILITY AVAILABLE AT ADITYA BIRLA MEMORIAL HOSPITAL:**

At Aditya Birla Memorial Hospital we believe that the joy of life and motherhood is for everybody's hands. That's why we go the extra mile to give you the bundle of joy. The birth of your child, a precious gift that can never truly be replaced, there's a unique chance for couples who get a precious naturally or through infertility. With increase in the incidence of IVF as well as female infertility, there is an ever-increasing demand for diagnostic and therapeutic interventions for the management of infertile couples. Aditya Birla Memorial Hospital provides advanced comprehensive IVF services at our IVF Centre which will offer comprehensive range of IVF treatment. Our skilled specialist and staff provide the necessary IVF, training and experience required to offer you every procedure smoothly. Stay with Aditya Birla Fertility Centre. Make up for your long-awaited dream.

• Pune's first IVF lab with clean-room facility matching European standard for air quality to provide best culture condition for embryos • Molecular IVF lab with state-of-the-art equipment including a dedicated incubator provides environment to develop best quality embryos

**Facilities at Our Fertility Clinic:**

• In-vitro Fertilisation (IVF) • zona Manipulation (ZM) • Fertility Monitoring (ultrasound/Transvaginal Ultrasonography) • In-vitro Zygote Manipulation (IVZ)  
• Intra-Cytoplasmic Sperm Injection (ICSI) • Zygote Manipulation/Intracytoplasmic Sperm Injection (ZM/ICSI) • Sperm Washing/Embryo Washing • Egg Freezing Program • Sperm Donation Program • Embryo Donation Program • Surrogacy • Genetic Counselling



Aditya Birla Memorial Hospital, Clinch Road, Pune-411001. Helpline: 020-9071760/2124  
E-mail: admin@adityabirlahospital.com | Website: www.adityabirlahospital.com  
Obstetrics & Gynaecology Helpline: 020-90717122 | FOR PERSONAL QUERIES, CONTACT US DIRECTLY



**Scientific approach to shed that extra "ZERO"**

Obesity is fast becoming an epidemic in India, with morbid obesity affecting 1% of the country's population. Unhealthy eating habits and sedentary living are few of the reasons why Indians are being susceptible to obesity. If not taken care now, it will surely cause a serious problem in the future.

Aditya Birla Memorial Hospital Obesity Clinic is a state-of-the-art clinic where the entire meal and workout program will be customised to provide one of the best weight loss programs, so that you shed those extra kilos with a scientific approach.

**Services offered at Aditya Birla Memorial Hospital Obesity Clinic include:**

- Weight loss to lower elevated blood pressure in overweight
- Weight loss for the correction of dyslipidemia
- Weight loss for obese diabetes and lowering of elevated sugar levels
- Child obesity
- Adolescent obesity
- Infertility
- Osteoarthritis
- Weight loss for general fitness



PHYSICIAN: DR. RAJESH K. SHARMA

Aditya Birla Memorial Hospital, Clinch Road, Pune-411001. Obesity Clinic: 020-90717124  
E-mail: admin@adityabirlahospital.com | Website: www.adityabirlahospital.com







It's more about the journey  
than the destination.



Be it your life or a business trip, it's all about the journey than the destination which makes you who you are. Pluto Car Rentals just makes that journey safe, reliable and luxurious. After all, you are not just anybody. You are that somebody.

**Salient Features**

Customer Centric solutions | Round the clock 24x7 operations | Network in all major metropolitan | Trained Chauffeurs in hospitality and customer care

**Luxury Cars**

Mercedes | S-Class, E-Class, C-Class, Honda | Accord, BMW, Civic, City, Toyota | Ferrari, Daimler, Infiniti

**Pluto Travels India Pvt. Ltd.**

B-4, Sakinaka Apartments, 1145 F.C. Road, Near to Shreehari Restaurant, Opp. Police Ground, Shivajinagar, Pune - 411016. Tel: 91-20-25918208 Fax No: 91-20-25627758 Email: [info@plutoindia.com](mailto:info@plutoindia.com) URL: [www.plutoindia.com](http://www.plutoindia.com)

**Corpus Cars**

Unit No. 104, M & M Shree Building, Tappa Road, Near Deemed to be Univ. VJ, Mumbai - 400058. Tel: 022-26181027



# CALL IT THE WHEELS OF RELIABILITY

Safety, Reliability and Luxury are here by how you rent a car from Pluto Car Rentals. When your journey is safe, be doubly sure to reach your destination on time.

**Salient Features**

Customer Centric solutions | Round the clock 24x7 operations | Network in all major metropolitan | Trained Chauffeurs in hospitality and customer care

**Luxury Cars**

Mercedes | S-Class, E-Class, C-Class, Honda | Accord, BMW, Civic, City, Toyota | Ferrari, Daimler, Infiniti

**Pluto Travels India Pvt. Ltd.**

B-4, Sakinaka Apartments, 1145 F.C. Road, Near to Shreehari Restaurant, Opp. Police Ground, Shivajinagar, Pune - 411016. Tel: 91-20-25918208 Fax No: 91-20-25627758 Email: [info@plutoindia.com](mailto:info@plutoindia.com) URL: [www.plutoindia.com](http://www.plutoindia.com)

**Corpus Cars**

Unit No. 104, M & M Shree Building, Tappa Road, Near Deemed to be Univ. VJ, Mumbai - 400058. Tel: 022-26181027





### TAKE OFF TO HIGH FLYING CAREERS IN AIRLINE PROCESS

#### Inviting Applications for Customer Support Associates for Airline Process

**Eligibility Criteria** • Graduates / Undergraduates • Age - 18 to 30 yrs. • Excellent communication skills in English • Willingness to work in night shifts • M.Sc./ B.Tech. need not apply

WALK IN

Walk in for an interview from **24<sup>th</sup> to 28<sup>th</sup> August 2018** (Tuesday to Thursday) between **12 noon & 5:30 pm** with your resume, 2 passport size photos, photo-id and experience & qualify stress profile at the following venue:

• Wipro BPO, 1215, F2, Avenue, off Ferguson College Road, Shivajinagar, Pune. Landmark - Lane opposite Ferguson College Main Gate (Adjacent to Hotel Savaria), next to Tata Capital. Contact No.: 020-60294517, 60299927

"Wipro is an Equal Opportunity Employer. We encourage physically challenged candidates to apply."

**PLS. NOTE** | Get a head start and if we give an offer, you get a goodie!

**Wipro BPO**

Winning by Applying Thought



### HAPPENING CAFETERIA TO HELP YOU RECHARGE

SEE WIPRO BPO FOR A GREAT WORKING EXPERIENCE

All Wipro BPO Office locations are just about drinking in the work stations and providing calls. Our campus has a wide range of recreational and sports facilities to make your breaks, even more exciting. Join us and enjoy! Discover many reasons that make following you home.

**INVITING APPLICATIONS AT EASTERN INDIA'S LARGEST BPO FOR:**  
**TECHNICAL HELPDESK / CUSTOMER SUPPORT ASSOCIATES FOR VOICE PROCESS**

**Eligibility Criteria** • Graduates / Undergraduates in any stream • 18-30 year of age • Good communication skills • Engineering Graduates from Electronics & Telecommunication, Computer Science, Electrical & Mechanical streams will be preferred

**VOICE & ACCENT TRAINER**

**Eligibility Criteria** • 3-4 years of experience in Voice & Accent Training • Strong and powerful speaking skills • Excellent spoken and written English communication skills • Proficient with MS Office (Word, Excel, PowerPoint)

• M.C.A. / M.B.A. not eligible • Candidates should not be a part of any regular academic course

Must Have • Willingness to work in night shifts • Basic computer knowledge

Walk in for an interview with resume, passport size colour photograph, photographs of address, photo ID card and original of education & work experience documents.

**WALK IN**  
Dates: 1<sup>st</sup>, 4<sup>th</sup>, 7<sup>th</sup> & 8<sup>th</sup> AND 10<sup>th</sup>, 13<sup>th</sup> & 14<sup>th</sup> April '18. Time: 10 am to 4 pm.  
Venue: Wipro BPO, Gate No. 2, Plot No. 6, Block 29C, Sector 9, Salt Lake City, Kolkata.

• M.C.A. / M.B.A. not eligible • Candidates should not be a part of any regular academic course  
• Willingness to work in night shifts • Basic computer knowledge

"Wipro BPO is an Equal Opportunity Employer"

**Wipro BPO**  
Winning by Applying Thought

### SMART SYSTEMS TO MAKE YOU GROW SMARTER

SEE WIPRO BPO FOR A GREAT WORKING EXPERIENCE

All Wipro BPO, we are constantly endeavoring to update our systems and adopt high-tech solutions. This not only helps us deliver better solutions to our clients but also makes our process efficient and smart in the work flow. This gives us a decisive edge in the fast growing BPO industry. Join us today and reap the benefits.

**INVITING APPLICATIONS AT EASTERN INDIA'S LARGEST BPO FOR:**  
**TECHNICAL HELPDESK / CUSTOMER SUPPORT ASSOCIATES FOR VOICE PROCESS**

**Eligibility Criteria** • Graduates / Undergraduates in any stream • 18-30 year of age • Good communication skills • Engineering Graduates from Electronics & Telecommunication, Computer Science, Electrical & Mechanical streams will be preferred

**VOICE & ACCENT TRAINER**

**Eligibility Criteria** • 3-4 years of experience in Voice & Accent Training • Strong and powerful speaking skills • Excellent spoken and written English communication skills • Proficient with MS Office (Word, Excel, PowerPoint)

• M.C.A. / M.B.A. not eligible • Candidates should not be a part of any regular academic course

Must Have • Willingness to work in night shifts • Basic computer knowledge

Walk in for an interview with resume, passport size colour photograph, photographs of address, photo ID card and original of education & work experience documents.

**WALK IN**  
Dates: 1<sup>st</sup>, 4<sup>th</sup>, 7<sup>th</sup> & 8<sup>th</sup> AND 10<sup>th</sup>, 13<sup>th</sup> & 14<sup>th</sup> April '18. Time: 10 am to 4 pm.  
Venue: Wipro BPO, Gate No. 2, Plot No. 6, Block 29C, Sector 9, Salt Lake City, Kolkata.

• M.C.A. / M.B.A. not eligible • Candidates should not be a part of any regular academic course  
• Willingness to work in night shifts • Basic computer knowledge

"Wipro BPO is an Equal Opportunity Employer"

**Wipro BPO**  
Winning by Applying Thought



### TAKE OFF TO HIGH FLYING CAREERS IN AIRLINE PROCESS

#### Inviting Applications for Customer Support Associates for Airline Process

**Eligibility Criteria** • Graduates / Undergraduates • Age - 18 to 30 yrs. • Excellent communication skills in English • Willingness to work in night shifts • M.Sc./ B.Tech. need not apply

WALK IN

Walk in for an interview from **24<sup>th</sup> to 28<sup>th</sup> August 2018** (Tuesday to Thursday) between **12 noon & 5:30 pm** with your resume, 2 passport size photos, photo-id and experience & qualifications profile at the following venue:

• Wipro BPO, 1215, F2, Avenue, off Ferguson College Road, Shivajinagar, Pune. Landmark - Lane opposite Ferguson College Main Gate (Adjacent to Hotel Savaria), next to Tata Capital. Contact No.: 020-60294517, 60299927

"Wipro is an Equal Opportunity Employer. We encourage physically challenged candidates to apply."

**PLS. NOTE** | Get a head start and if we give an offer, you get a goodie!

**Wipro BPO**

Winning by Applying Thought



We don't assume. We believe in reaching that every mile to understand your unique needs. It helps in creating spaces that reflect your aspirations and individuality. You inspire us to innovate, employ environment friendly and technologically superior methods and ensure top class quality in every creation. Visit any of our properties to witness this 'value-driven' approach of building confidence.



OUR MASTER PLANS  
HAVE A UNIQUE  
MEASURING UNIT

**YOU**

Visit Nandan Aerial @ Times Showaza, Sovereign 2 on 28th and 29th May 2011 at Hotel Le Meridien, Pune  
Nandan Building No. 140 - 33 Nandan Plaza, Phase 2 @ Indira Nagar Housing Society, Behind E.C. Road, Sarvodaya Road Road, Pune - 411 014 | Tel: 4141 5111  
Building Office, Nandan Properties, Off. Bore Rd., Near Sahakar Road, Behind HP Complex, Borewell, Pune-411 007 | Contact No. And: 9489432111 | M. Sachin: 952203815  
M/S: Nandan - M 3444 | [www.nandanbuildings.com](http://www.nandanbuildings.com) | [www.nandanproperties.com](http://www.nandanproperties.com)

Quality from  
NANDAN  
**FESTIVA**  
2008-2009

Quality from  
NANDAN  
**ASPIRA**  
2008-2009

Quality from  
NANDAN  
**PROSPERA**  
2008-2009

Quality from  
NANDAN  
**EUPHORA**  
2008-2009

Quality from  
NANDAN  
**INSPERA**  
2008-2009

Quality from  
NANDAN  
**Astro**  
2008-2009

Quality from  
NANDAN  
**Astro**  
2008-2009

At Nandan Builders, we believe in the power of **WE**. Ideas and suggestions coming from our esteemed customers, well-wishers and business associates play an equally important role in conceptualizing and developing our landmarks. It helps in creating spaces that reflect your aspirations and individuality. **YOU** inspire **US** to innovate, employ environment friendly and technologically superior methods and ensure top class quality in every creation. Visit any of our properties to witness this 'value-driven' approach of building confidence.



THE BEST CREATIONS ARE  
THE RESULT OF LESS ME  
AND MORE

**WE**

Quality from  
NANDAN  
**FESTIVA**  
2008-2009

Quality from  
NANDAN  
**ASPIRA**  
2008-2009

Quality from  
NANDAN  
**PROSPERA**  
2008-2009

Quality from  
NANDAN  
**EUPHORA**  
2008-2009

Quality from  
NANDAN  
**INSPERA**  
2008-2009

Quality from  
NANDAN  
**Astro**  
2008-2009

Visit Nandan Aerial @ Times Showaza, Sovereign 2 on 28th and 29th May 2011 at Hotel Le Meridien, Pune  
Nandan Building No. 140 - 33 Nandan Plaza, Phase 2 @ Indira Nagar Housing Society, Behind E.C. Road, Sarvodaya Road Road, Pune - 411 014 | Tel: 4141 5111  
Building Office, Nandan Properties, Off. Bore Rd., Near Sahakar Road, Behind HP Complex, Borewell, Pune-411 007 | Contact No. And: 9489432111 | M. Sachin: 952203815  
M/S: Nandan - M 3444 | [www.nandanbuildings.com](http://www.nandanbuildings.com) | [www.nandanproperties.com](http://www.nandanproperties.com)

We create spaces that surpass your expectations, all while we go to one after project completion in the 'Pride of Ownership' on your face. This certification, recognition and reward is as gratifying as that. We believe in reaching that every mile to understand your unique needs. It helps in creating spaces that reflect your aspirations and individuality. You inspire us to innovate, employ environment friendly and technologically superior methods and ensure top class quality in every creation. Visit any of our properties to witness this 'value-driven' approach of building confidence.



PRIDE OF POSSESSION  
ON YOUR FACE  
CERTIFICATE OF  
COMPLETION FOR

**US**

Quality from  
NANDAN  
**FESTIVA**  
2008-2009

Quality from  
NANDAN  
**ASPIRA**  
2008-2009

Quality from  
NANDAN  
**PROSPERA**  
2008-2009

Quality from  
NANDAN  
**EUPHORA**  
2008-2009

Quality from  
NANDAN  
**INSPERA**  
2008-2009

Quality from  
NANDAN  
**Astro**  
2008-2009

Visit Nandan Aerial @ Times Showaza, Sovereign 2 on 28th and 29th May 2011 at Hotel Le Meridien, Pune  
Nandan Building No. 140 - 33 Nandan Plaza, Phase 2 @ Indira Nagar Housing Society, Behind E.C. Road, Sarvodaya Road Road, Pune - 411 014 | Tel: 4141 5111  
Building Office, Nandan Properties, Off. Bore Rd., Near Sahakar Road, Behind HP Complex, Borewell, Pune-411 007 | Contact No. And: 9489432111 | M. Sachin: 952203815  
M/S: Nandan - M 3444 | [www.nandanbuildings.com](http://www.nandanbuildings.com) | [www.nandanproperties.com](http://www.nandanproperties.com)





1st Prize | Poster Competition | Maharashtra State Art | 1993



Against Female Foeticide

1st Prize | Poster Competition | Maharashtra State Art | 1992



Peace

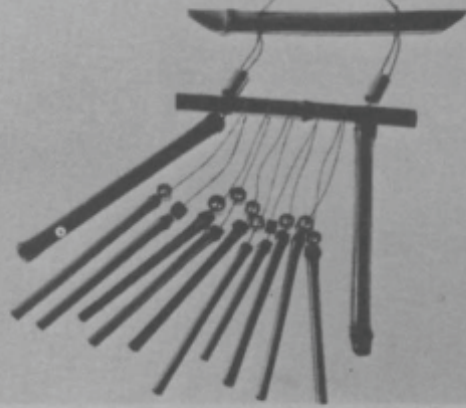


Poverty Trapped

Silver Medal | Poster Competition | Maharashtra State Art | 1991



## Swissair's invitation to Singapore, twice a week, rings with a grace as charming as the city.



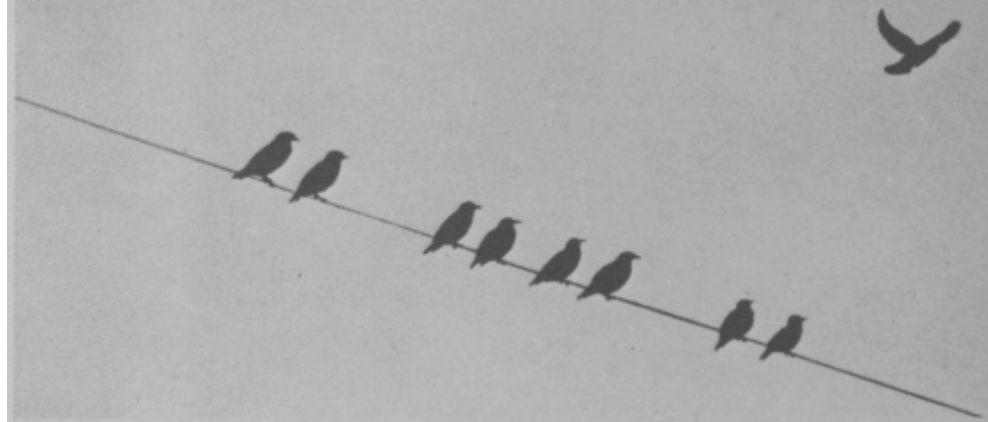
The gentle sound of the wind chime shown here often reminds people of our unobtrusive service enjoyed en route to Singapore. The Friday flight from Bombay is non-stop while the Sunday departure has a brief halt

in Colombo. We have 8 (not 9) seats in a row in our economy cabins to give you more room for comfort and access to our hospitality. All told, a charming offer worth remembering whenever Singapore beckons you.

For details call your IATA travel agent or the nearest Swissair office:  
 AHMEDABAD 36041 • BANGALORE 31983 • BOMBAY 20923 • CALCUTTA 44843 • DELHI 32307 • ERNAKULAM 32380 • HYDERABAD 33957 • KATMANDU 12451 • MADRAS 8280  
 Even cargo by Swissair gets Swisscare.

swissair

## Because every extra cm of space adds km to your comfort, Swissair has 8 instead of 9 seats abreast in the economy class.



Most airlines know that passenger comfort can be heightened if there's more room to sit, sleep, stretch, relax and enjoy cabin service. But only a few do something about it. Swissair, as you know, is in the practicing minority. With 8 (not 9) seats in a row in its DC-10s and 9, instead of 10,

seats in trans-Atlantic 74s. More room for you, but fewer seats for us to sell on every flight, in short. But full value for our full-paying passengers who prefer to keep flying with us time after time.

For details call your IATA travel agent or the nearest Swissair office:  
 AHMEDABAD 36041 • BANGALORE 31983 • BOMBAY 20923 • CALCUTTA 44843 • DELHI 32307 • ERNAKULAM 32380 • HYDERABAD 33957 • KATMANDU 12451 • MADRAS 8280

swissair

## Amazing how much you can do in a short transit stopover in Switzerland.



Experienced business travellers will vouch that Zurich and Geneva offer the best organized havens for transit passengers. Everything you'd like to reach is within quick and easy reach. Communications, conference facilities, shopping, rest and

refreshments, the lot. In fact, so pleasurable and profitable is a stopover in Switzerland, you never realize how time can fly on the ground till you've passed a bit of it there.

For details call your IATA travel agent or the nearest Swissair office:  
 AHMEDABAD 36041 • BANGALORE 31983 • BOMBAY 20923 • CALCUTTA 44843 • DELHI 32307 • ERNAKULAM 32380 • HYDERABAD 33957 • KATMANDU 12451 • MADRAS 8280  
 Even cargo by Swissair gets Swisscare.

swissair



# Designing for Outdoor Advertising

---

Incomparable living  
at  
**Kalyaninagar**

**Kumar Kruti - 2, 2½ & 3 BHK Lavish Terrace Apartments**

Tel: 9960594244, 40006001 / 2. sales@kumarbuilders.com www.kumarbuilders.com

**Kumar Builders**  
PUNE · MUMBAI · BANGALORE · HYDERABAD  
RESIDENTIAL · IT PARK · RETAIL · COMMERCIAL · SEZ

LIVING UPTO  
NEW EXPECTATIONS  
EVERYDAY

**FREE REGISTRATION ON OUR RESIDENTIAL PROJECTS**  
Kumar Sublime, Kondhwa

Call: +91-20-40006001 / 2, 26350065. Website: www.kumarbuilders.com

**Kumar Builders**  
PUNE · MUMBAI · BANGALORE · HYDERABAD  
We build trust  
PUNE · MUMBAI · BANGALORE · HYDERABAD  
RESIDENTIAL · IT PARK · RETAIL · COMMERCIAL · SEZ

Bountiful Living  
at  
**Kondhwa**

**Kumar Sublime - 2, 2½ & 3 BHK Spacious Terrace Flats**

Tel: 9960594242, 40006001 / 2. sales@kumarbuilders.com www.kumarbuilders.com

**Kumar Builders**  
PUNE · MUMBAI · BANGALORE · HYDERABAD  
RESIDENTIAL · IT PARK · RETAIL · COMMERCIAL · SEZ

High Life  
at  
**Panchgani**

**Windsor Park - 2, 3 & 4 BHK Independent Bungalows**

Call: 9960594212, 9960594257. sales@kumarbuilders.com www.kumarbuilders.com

**Kumar Builders**  
PUNE · MUMBAI · BANGALORE · HYDERABAD  
RESIDENTIAL · IT PARK · RETAIL · COMMERCIAL · SEZ

4,500 ft.  
Above your  
expectations.



**Kumar Builders**<sup>®</sup>

An ISO 9001:2008 & 14001:2004 Company  
PURE, MUMBAI, BANGALORE, HYDERABAD  
RESIDENTIAL • IT PARK • RETAIL • COMMERCIAL • SEZ

Tel: 020-66046001/2, 66046121, 99605 94212, 99606 55566  
sales@kumarbuilders.com, www.kumarbuilders.com

### Amenities

- Jacuzzi
- Billiards
- Golf
- Singaporean Landscape
- Basketball Court

Luxurious Bungalows  
at Panchgani - Mahabaleshwar Road

Bookings open

A project by Kumar & Malhotras



The High Life

4,500 ft.  
Above your  
expectations.



**Kumar Builders**<sup>®</sup>

An ISO 9001:2008 & 14001:2004 Company  
PURE, MUMBAI, BANGALORE, HYDERABAD  
RESIDENTIAL • IT PARK • RETAIL • COMMERCIAL • SEZ

Tel: 020-66046001/2, 66046121, 99605 94212, 99606 55566  
sales@kumarbuilders.com, www.kumarbuilders.com

### Amenities

- Jacuzzi
- Billiards
- Golf
- Singaporean Landscape
- Basketball Court

Luxurious Bungalows  
at Panchgani - Mahabaleshwar Road

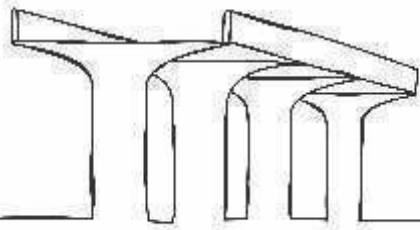
Bookings open

A project by Kumar & Malhotras



The High Life





Span a River

NATIONAL  
infrastructure

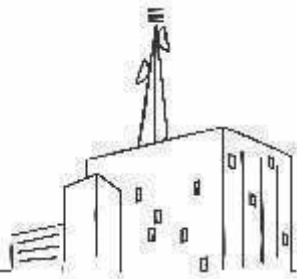
[www.abilgroup.com](http://www.abilgroup.com)  
Toll Free # 1800 233 0777



Find the Stone

MINING  
natural resources

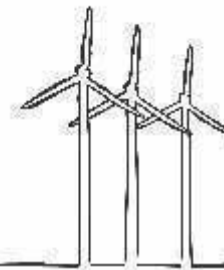
[www.abilgroup.com](http://www.abilgroup.com)  
Toll Free # 1800 233 0777



Write a Code

information  
TECHNOLOGY

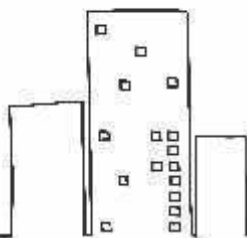
[www.abilgroup.com](http://www.abilgroup.com)  
Toll Free # 1800 233 0777



Catch The Wind

alternative  
ENERGY

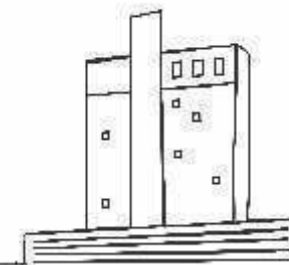
[www.abilgroup.com](http://www.abilgroup.com)  
Toll Free # 1800 233 0777



Make a Life

residential  
TOWERS

[www.abilgroup.com](http://www.abilgroup.com)  
Toll Free # 1800 233 0777



Have  
Another Home

5★ Hotels

[www.abilgroup.com](http://www.abilgroup.com)  
Toll Free # 1800 233 0777





My Dad is the force behind  
**Mighty Sky-scrappers.**

He is an ABILian!

Over 0000000000 sq.ft. of developments featuring world-class Residential, Commercial & Business Properties.



**REAL ESTATE**  
residential Towers

**WWW.ABILGROUP.COM**  
Toll Free # 1800 233 0777



My Dad is the force behind  
**Hospitality Benchmarks!**

He is an ABILian!

Over 0000000000 sq.ft. of developments featuring one of India's Finest 5 Star Luxury Hotels.



**HOSPITALITY**  
5 Star Hotels

**WWW.ABILGROUP.COM**  
Toll Free # 1800 233 0777



My Dad is the force behind  
**Lightening Fast Expressways!**

He is an ABILian!

Makers of over 00000 infrastructural projects featuring Highways, Canals, Dams, Bridges and Breakwaters across India.



**INFRASTRUCTURE**  
(National Infra)

**WWW.ABILGROUP.COM**  
Toll Free # 1800 233 0777



live a tropical life.

2 - 3 BHK  
Tropical Homes  
at Ravet, Pune

tropica  
Reside amidst bliss!

The advertisement features a woman with her eyes closed, wearing a crown of tropical leaves and flowers. She holds two pink lotus flowers. The background is white with a wooden base. The text is in a clean, sans-serif font, and the brand name 'tropica' is in a script font.



Every piece has a story

KROME

Sometimes elegant,  
at times chic,  
always beautiful,  
sweet sheets  
of inspiration.  
They prove  
KROME can take  
an exclusive story...  
the place.

The advertisement shows a woman in a long, flowing red dress holding a smartphone. In the background, there is a red leather sofa on a dark, stone-paved floor. The sky is dark and cloudy. The text is in a white, sans-serif font.



www.ilisa.in

**ILISA**  
a new you

The streak of style

Jaihind, Level 2, Aundh & Kothrud [www.ilisa.in](http://www.ilisa.in)

**ILISA**  
a new you

The streak of style

Jaihind, Level 2, Aundh & Kothrud [www.ilisa.in](http://www.ilisa.in)

**ILISA**  
a new you

The streak of style

Jaihind, Level 2, Aundh & Kothrud [www.ilisa.in](http://www.ilisa.in)

www.ilisa.in

**ILISA**  
a new you

Woman's fashion & accessories

Level 2 Jaihind, Aundh, Parihar Chowk

www.ilisa.in

**ILISA**  
a new you

Woman's fashion & accessories

Level 2 Jaihind, Aundh, Parihar Chowk

S A L E **50% UPTO DISCOUNT**

Salwaar Kameez Rs. 599 onwards

S A L E **50% UPTO DISCOUNT**

Capris Rs. 399 onwards

Tees Rs. 199 onwards

# Brochures Print Production









## TRANQUILITY. WHAT'S THE PRICE YOU'D PAY?



It's privacy you yearn for. Windsor Park is the answer. Here you only share space with the birds and the breeze and they gladly oblige. Spread over 50 acres of lush green, behind the houses at Windsor Park is serene space and elegance where calm sunlight and clouds passing by are the only visitors.

Reflecting the warmth and finesse of Malabar Nature are cascading waterfalls and meandering walk ways that leave you spellbound. Attention to detail, fine craftsmanship and meticulous planning rightly proclaim this as your very own hub of rejuvenation.

Windsor Park is a place to transcend. Your silence is only broken by the melody of nature, laughter of your loved ones or whisper of the breeze.

Indeed, a High Life that's truly livable.



## SOLITUDE. WHAT'S THE PRICE YOU'D PAY?



At a time when the world is moving faster than ever, relish the "high" of the high life at Windsor Park. You can enjoy the soothing ripples of the "swoosh" or catch up on your reading by the fireplace. Only at Windsor Park can you expect a life full of enchantment, each day more fulfilling than the last. Quiet strolls down the Reflexology path and serene spots in the magical Shalimar gardens is what makes Windsor Park a surreal experience.

Windsor Park is the perfect place for unrequited silence that truly defines the High Life, making it priceless.



## HARMONY . WHAT'S THE PRICE YOU'D PAY?



People have travelled the world in search of sleep. And their search ends at Windsor Park. It's not just a home, it's a place in a lifetime experience and lies unparalleled to any other experience. It is your castle in the clouds.

The ultimate quality of nature takes you far beyond a life you've imagined for yourself. It broadens your horizons and it is here that you realize the true essence of the High Life. As you enter Windsor Park you will reconnect to life and get in sync with the greater things it has to offer. Windsor Park will take you beyond the ordinary, it will capture your inner being.

**Windsor Park. It is, The High Life.**



With its cool climate and lush surroundings, the twin hill stations of Makaleshwar and Panchgani have been popular retreats since the days of the British Raj. Till today the English influence can be seen in the architecture and appare.

Panchgani derives its name from the five hills that surround it. The hills are topped by a volcanic plateau which is the second highest in Asia after the Tibetan plateau colloquially known as "Table Land". Home to some of the country's most elite boarding schools, Panchgani offers heart stopping views of the river Krishna and is a mere 18 kilometer drive from its twin hill station Makaleshwar.

Makaleshwar is a vast plateau bound by valleys on all sides. Colorful gardens, well winding forests with thousands of whispering trees and breathtaking scenery create a perfect setting to reside.



Kumar Builders is an ISO 9001:2008 company which has become synonymous with quality construction. Staying true to their motto of "We Build Trust" Kumar Builders is known for maintaining international construction standards and more importantly for its transparency, reliability and strong professional ethics. They are amongst the top construction companies in India to get a ISO 45001:2018 certification. Recently Kumar Builders was also awarded the OHSAS 18001:2007 Health and Safety certification.

Currently, Kumar Builders has over 27 ongoing projects in Pune, Mumbai, Bangalore and Panchgani. Windsor Park is a joint venture between Kumar Builders and the Malhotras, stalwarts in Indian industry. The property is an ancestral building belonging to the Malhotras, who have chosen to join hands with Kumar Builders to create Windsor Park, a gated community of international standards with world class facilities and amenities.







(3)


"We believe...

- ...that inspired ideas create inspired constructions
- ...that quality can never be compromised
- ...that trust is the best of all relationships
- ...that the customer is king and satisfaction is his right"

**TuScan**  
ESTATE  
Collage Homes, Spaces, Places

**KOLTE-PATIL DEVELOPERS LTD.**  
Head Office: Andhra Pradesh, State Road House, Pune - 411 001, Tel: +91 20 4422 8344/7411  
Sales & Marketing Office: Hyderabad, 5th Floor, W&A, Hyderabad, Pune - 411 004  
Tel: +91 20 4440 0740/7411, Mobile: 91080/91079/42940/91005 04840  
Email: Sales@koltepatil.com, Hyderabad@koltepatil.com, Website: www.koltepatil.com

Disclaimer: Kolte Patil Developers Ltd. is not responsible for any loss or damage caused by the use of any information or data provided on this website. The information is provided for informational purposes only and is not intended to be used as a basis for any investment or other financial decision.



**TuScan**  
ESTATE  
Collage Homes, Spaces, Places

LANDSCAPE  
LOCATION  
ELEVATION  
LANDSCAPE  
SPACE  
LANDSCAPE  
LOCATION  
AMENITIES  
ELEVATION  
LANDSCAPE  
LOCATION  
AMENITIES  
SPACE  
ELEVATION  
LANDSCAPE  
AMENITIES

**COLLAGE HOMES**

LOCATION  
ELEVATION  
LANDSCAPE  
AMENITIES  
SPACE



A collage of moments that speaks for itself.

A collage of moments you never want to miss.

A collage of moments that defines who you are.

A collage of moments you call your life.

### Introducing exquisite 3 D & 4 BHK Collage Homes at Khazal!

From moments of joy or sadness to love, from feelings of anticipation, of anger & fear, the longhappiness of what you call a collage, a collage of moments you call your life.

Presenting **Three BHKs, separate 2 BHK Apartments, & 4 BHK Penthouses**, in this new contemporary development, the most luxurious of life.

With amazing highlights and exciting details, the collage moments & feelings begin to come out, revealing the moments that speak for itself. The moments that you don't want to miss, the moments that define who you are. All moments that you have captured from inside your heart.

**Come and take a walk towards the memory lane. Come to Khazal Estate.**





(4)

  
**The Corinthians**  
BOUTIQUE HOTEL  
Your World...and of the world

North Coast, 1188 Avenue, South Point, P.O. Box 41528  
Tel: +91 20 26978401, Fax: +91 20 26978402  
[www.TheCorinthians.com](http://www.TheCorinthians.com)



Plethora of World Class Hospitality...

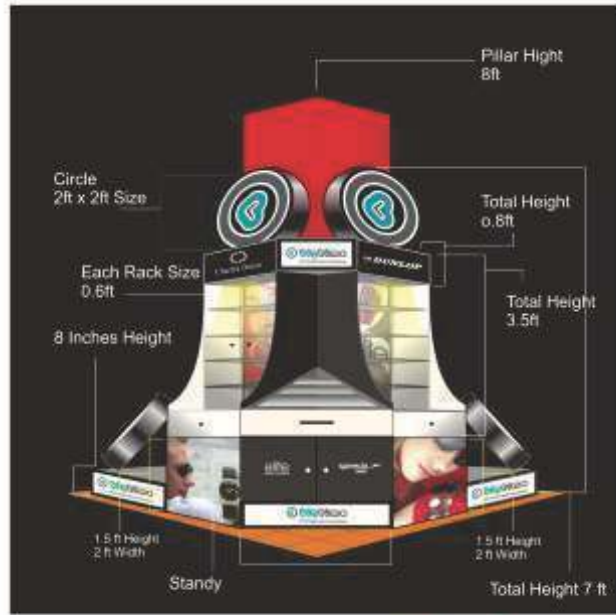


  
**The Corinthians**  
BOUTIQUE HOTEL  
Your World...and of the world

- Room's**
  - Presidential Suite
  - Executive Suite
  - Executive Room
  - Deluxe Superior
  - Deluxe Room's
- Dining**
- Meeting and Banquets**
- Recreation**
  - Spa
  - Swimming Pool
  - Swimming Pool
  - Spa's
  - Activity Center
- About Us**

# Art Direction for Stall Designing





2ft x 2ft Corner



Side view







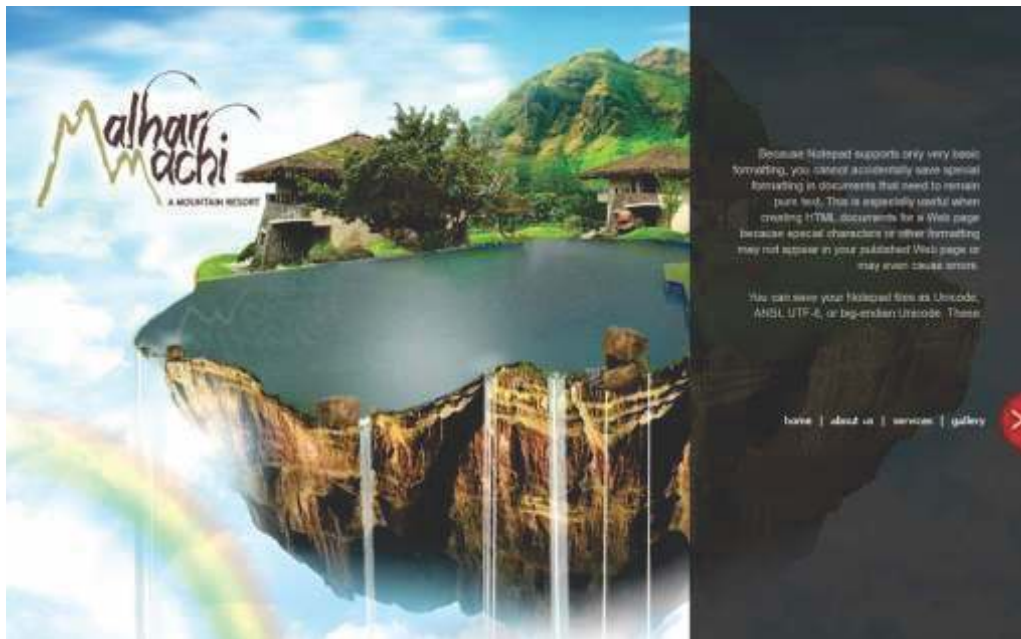


Web  
Visualizing & Art Direction

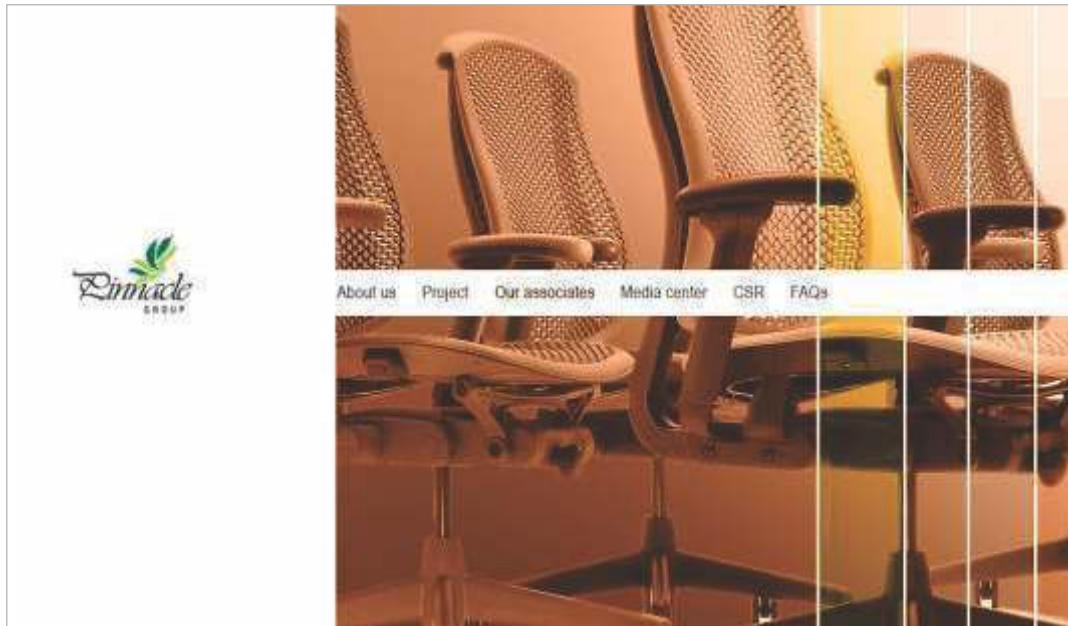
---



(1)



(2)





(3)



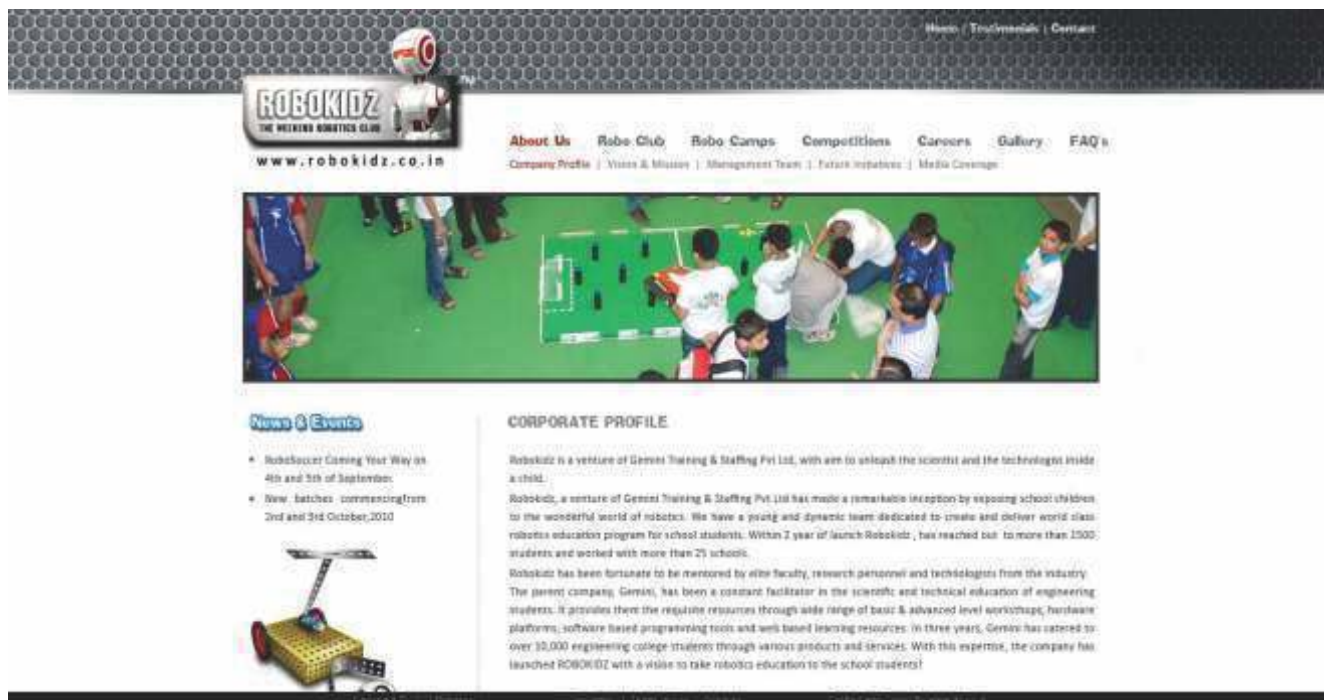


(4)











Home | Contact



"FLUSH HOMES OFFERING SPACE TO ENJOY YOUR LIFE"

Corporate | Who We | Projects | Our Services | FAQ | Testimonials | Contact



The word SANSKRUTI came into existence with a multidimensional vision. Embracing CULTURE in form, to serve the basic need of a human being - "THE SPACE". The name SANSKRUTI itself infuses our values and faith in justice. With the changing face, our vision will be the strong steel backbone in our road forward.

Home | Contact



"SPACE IDENTIFYING WITH YOUR DREAMS... EMOTIONS... & YOUR RELATIONS"

Corporate | Who We | Projects | Our Services | FAQ | Testimonials | Contact



The word SANSKRUTI came into existence with a multidimensional vision. Embracing CULTURE in form, to serve the basic need of a human being - "THE SPACE". The name SANSKRUTI itself infuses our values and faith in justice. With the changing face, our vision will be the strong steel backbone in our road forward.

Home | Contact



"ONCE BEING THE WORLD COMES TOGETHER FOREVER"

Corporate | Who We | Projects | Our Services | FAQ | Testimonials | Contact



The word SANSKRUTI came into existence with a multidimensional vision. Embracing CULTURE in form, to serve the basic need of a human being - "THE SPACE". The name SANSKRUTI itself infuses our values and faith in justice. With the changing face, our vision will be the strong steel backbone in our road forward.

Home | Contact



"COMFORTABLE, PLEASANT, INVITING SPACES CREATED EXCLUSIVELY FOR YOU"

Corporate | Who We | Projects | Our Services | FAQ | Testimonials | Contact



The word SANSKRUTI came into existence with a multidimensional vision. Embracing CULTURE in form, to serve the basic need of a human being - "THE SPACE". The name SANSKRUTI itself infuses our values and faith in justice. With the changing face, our vision will be the strong steel backbone in our road forward.

Home | Contact



Corporate | Who We | Projects | Our Services | FAQ | Testimonials | Contact



**OVERVIEW**

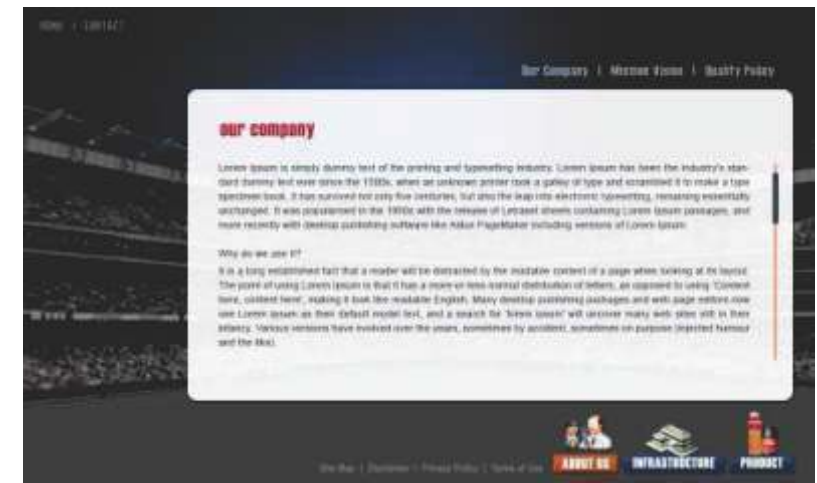
The name SANSKRUTI came into existence with a multidimensional vision. Embracing CULTURE in form, to serve the basic need of a human being - "THE SPACE". The name SANSKRUTI itself infuses our values and faith in justice. With the changing face, our vision will be the strong steel backbone in our road forward.

"Sanskriti", the company is a combined venture of the top construction firms in Maharashtra. Sankar and Sankar, promoters of the firm, Sankar - Maharashtra, which are operating in the field of construction and development since about 25 years. In the spirit of World's best practice, with the complete transparency, the company has completed construction of more than 1000 residential projects, providing complete and 100% service in infrastructure development. The total completed area approximately amounts to 1,00,00,000 sq. ft. These carry various awards across major projects such as Pooja's Enigma, SMC's Cosmos, Subhiksha, Emerald, Shreeva with an area up to 10,00,000 sq. ft. each.

Sanskriti Infrastructure & Development Pvt. Ltd. has started its operations in the year 2002 with its first commercial projects in Pune city. The company is a well thought-out and has developed its project systems and management structure by way of its many projects to stand in the field of construction and development.

After opening the operations in Pune City, Sanskriti has emerged as one of the leading real estate companies in the real estate business, providing functional space to the end user.

(7)



(8)

**DOWNTOWN**  
Residential > Commercial > Recreation >

**THE LANGSTON**

A TITANIC PROJECT WITH THE FINESSE OF GLAMOUR. THE LANGSTON IS ALL BUT A NORMAL 24K PROJECT.

Latest News << 10 Jan, 2011 | Latest news about all areas, ideas and new designs, and more... MORE >> [Click here to view the 3D gallery >](#)

[About Vibrant Place](#) | [Buzz in Town](#) | [Newsletter Sign up](#)

Sign up for newsletter. We will update you about our latest news.

Enter your name:

Enter email address:  **GO >>**

**What makes Downtown an Investor's Paradise**  
[KNOW MORE](#)

**Click Here >> VIEW OUR LOCATION MAP**

**DOWNTOWN**  
Residential > Commercial > Recreation >

**Manon Lake Place**

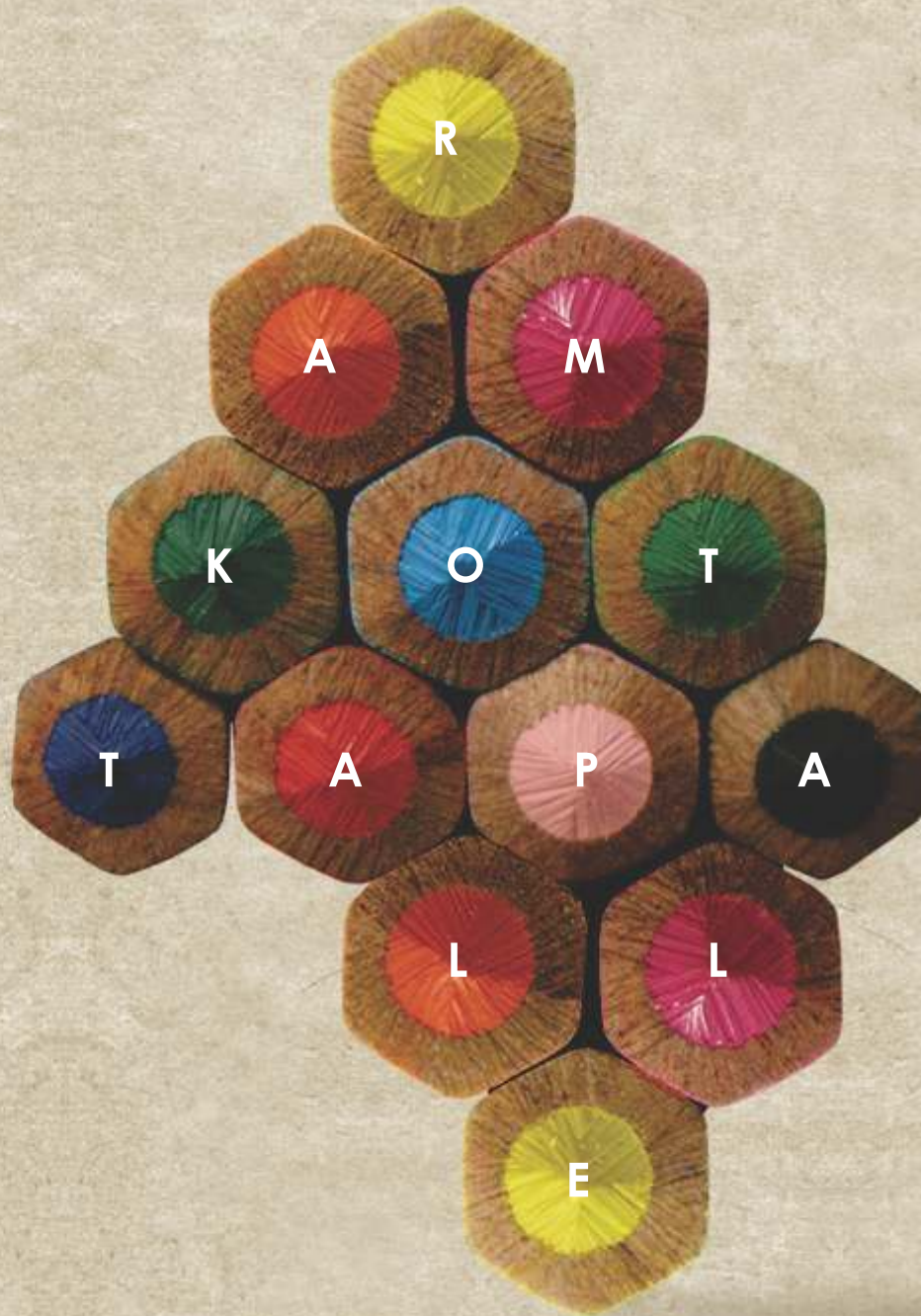
10 Jan, 2011 | Latest news about all areas, ideas and new designs, and more... MORE >> [Click here to view the 3D gallery >](#)

[About Vibrant Place](#) | [Buzz in Town](#) | [Newsletter Sign up](#)

Manon Lake Place  
Cura ullamcorper, eget ipsum posuere, nec tristique magna pretium pede magna adipiscing lobortis...  
[KNOW MORE](#)

**SEEKING A BULK BUY?**  
[Check the benefits >>](#)





**Ram Kottapalle**

Mobile : +91 9881679692

E-mail : ramkottapalle@yahoo.com

---

T h a n k s